

# VERTICAL PLATFORM LIFT

## VB1000

### Installation Manual



Revision 3 release  
Date 2025-02-06

**BARDUVA**  
Beržuonos str. 2, LT-02121, Vilnius Lithuania  
Tel: +37052310770  
Email: [sales@barduva.eu](mailto:sales@barduva.eu)  
[www.barduva.eu](http://www.barduva.eu)



## Contents

1.	Placement and levelling of the lower frame .....	5
2.	Assembly and levelling of the guide rails .....	6
2.1	Guide rails assembly .....	6
2.2	Installation of transverse beams .....	9
2.3	Installation of the central rail guide .....	10
2.4	Installation of top cross bar .....	10
2.5	Levelling and fixing to the wall .....	11
3.	Installation of an emergency lowering unit .....	12
4.	Fitting the platform .....	13
5.	Assembly and installation of main driving screw .....	16
5.1	Main driving screw upper fixation point, manual emergency lowering .....	18
6.	Installation of the trailing cable .....	19
6.1	Installation of enclosure corner elements .....	20
7.	Door installation .....	21
7.1	Door canopy installation .....	22
8.	Assembly of an enclosure .....	23
9.	Roof assembly (Outdoor installation) .....	25
10.	Wiring and cable management .....	28
11.	Installation of pit prop and emergency stop button .....	31
11.1	Pit prop installation .....	31
11.2	Installation of emergency stop button .....	32

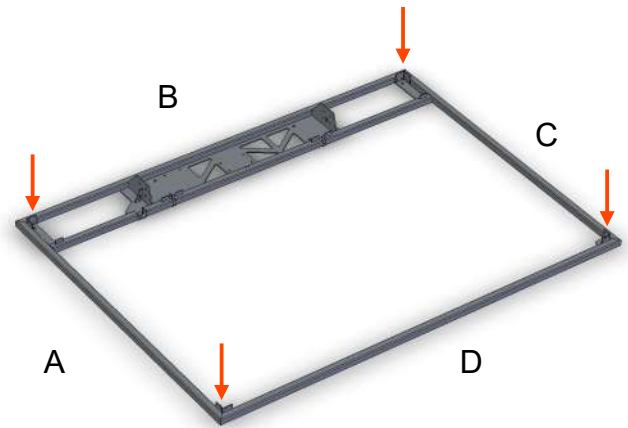
12.	Installation and adjustment of activation ramps .....	33
13.	Landing preparation for use .....	35
13.1	Landing height programming .....	35
13.2	Door contact and lock latch adjustment .....	37
13.3	Hydraulic door closer adjustment .....	39
13.4	BAR Automatic door opener/closer calibration (OPTIONAL) .....	39
14.	Lubrication .....	41
15.	Ceiling (if any) .....	42
16.	Assembly of guard (inner) wall .....	43
16.1	Installation of pasrtition wall panels .....	43

## 1. Placement and levelling of the lower frame

Place the bottom frame in its intended location. If the frame doesn't lie flat on the pit's bottom surface use the levelling plates in order to level the frame. In most of situations, more than one layer of plates must be applied.

Pic. 1.1 indicates the places where the levelling plates are to be applied.

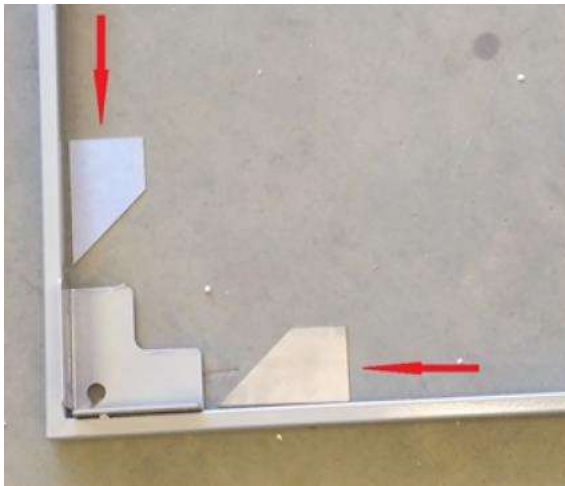
The base frame's "B" side should be installed as near as possible to the attachment structures (wall, floor overlay).



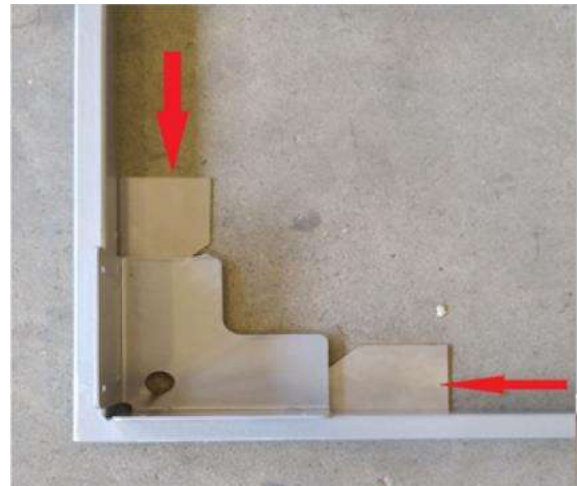
Pic. 1.1

When positioning the base frame please make sure that the lift enclosure will be able to pass freely and unobstructed through the entire height of the lift.

The levelling plates shall be placed so that their edges would be aligned with the frame edges (Pic.1.2, Pic. 1.3) and the plates would be hidden under the frame, but the plates shall not cover the anchor's holes.



Pic 1.2



Pic 1.3

Once the frame is levelled, secure the frame to the base with temporary means, as fixing rigidly will make it impossible to make adjustments later (if needed).

## 2. Assembly and levelling of the guide rails

Pic. 2.1 shows a general layout of lift frame.

Note that the frame can only be assembled on the B side of a lift.

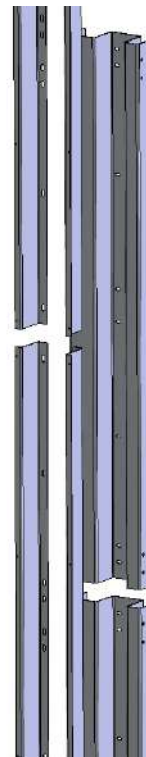


Pic. 2.1

### 2.1 Guide rails assembly

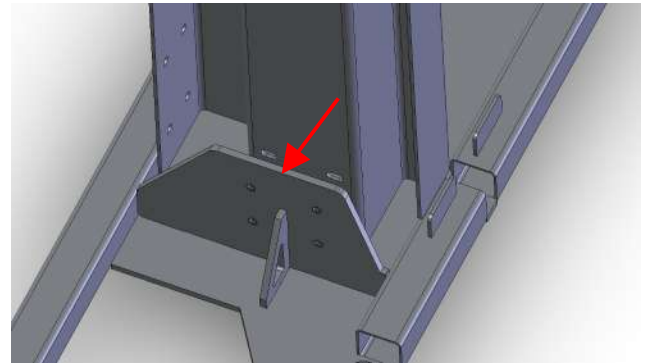
The guide rails is a composite structure consisting of a zigzag shaped rail with Z-shaped inserts. Pic. 2.2.

The inserts are attached to the zigzag rail with 4 mm diameter rivets. These elements are partially pre-assembled at the factory. Due to their unequal lengths, the elements overlap each other and the overlapping but not riveted elements will need to be riveted during the assembly process at site.



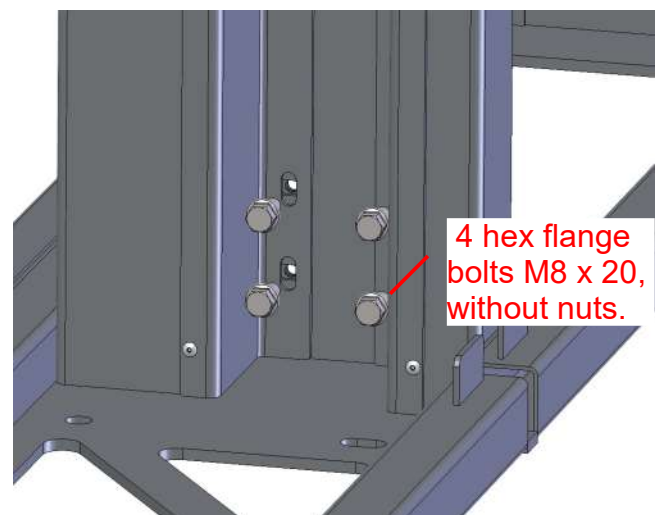
Pic. 2.2

Put the lower guide rail segments to the fixing plates of base frame. See Pic. 2.3.



Pic. 2.3

Match the pre-drilled holes in the guide rails with the ones on the base frame. Tighten all the elements together with 4 pcs. of bolts M8x20 without nuts. See Pic. 2.4.



Pic. 2.4

After attaching the lowest segments of the guide rails to the base frame, continue joining the other segments consequently respecting the increasing numeration.

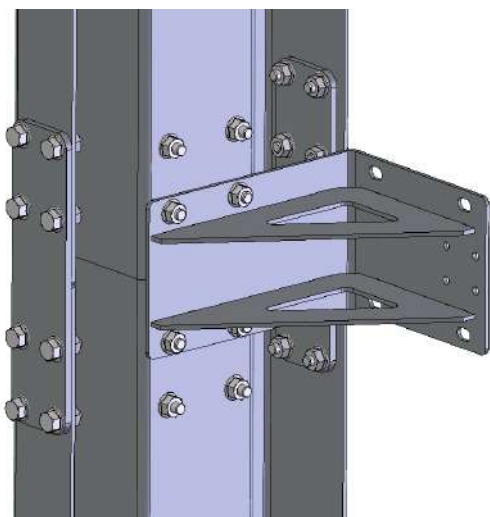
Refer to the lift's frame drawing in order to check the length of the guide rails segments in case if marks on them are not clear.

While joining the guide rails, make sure that the alignment pins perfectly fit in place and the bolt holes are matching. Pic. 2.5

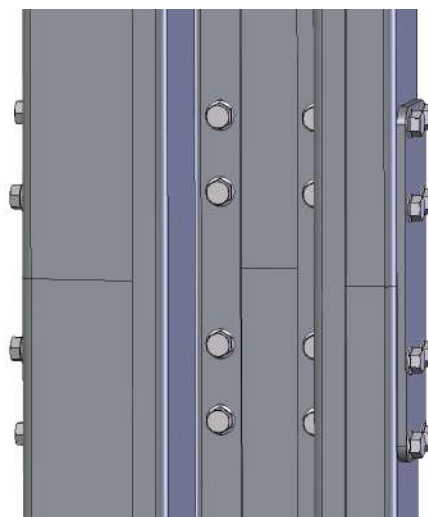


Pic. 2.5

Guide rail elements are connected to each other by plates, two in total for one connection, placed in front and rear of guide rail. At the same time the triangular element is also to be attached. Use bolts M8x20 with nuts. From the inside, the screws also cover the embedded Z-shaped elements. Pics. 2.6. and 2.7.



Pic. 2.6

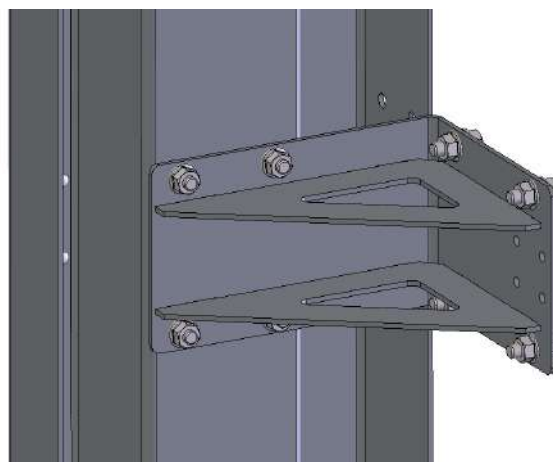


Pic. 2.7

Where the embedded Z-shaped elements connect, the fastening method is shown in Pics 2.8 and 2.9. Triangular element is also attached from the outside. Rivet Z-shaped elements where missing.



Pic. 2.8



Pic. 2.9

## 2.2 Installation of transverse beams

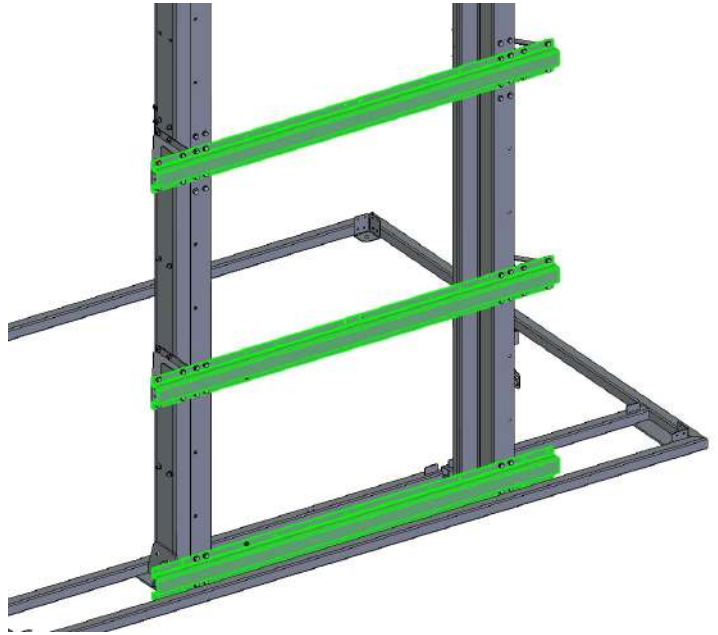
The guide rails are interconnected with each other by transverse beams (Pic. 2.10).

Transverse beams are located every 750 mm.

They are attached to the triangular elements and the guide rails.

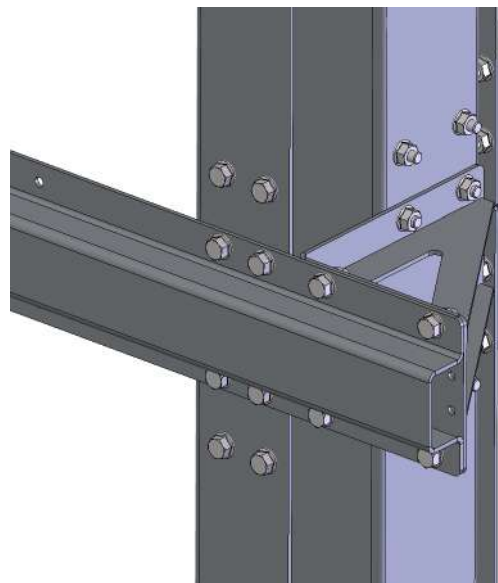
The crossbar in the lowest position is attached to the guide rail without triangular elements.

The crossbar located 750 mm from the ground requires the triangular elements to be attached separately because they do not stand where the guide rail elements connect and were not installed when assembling the rails.



Pic. 2.10

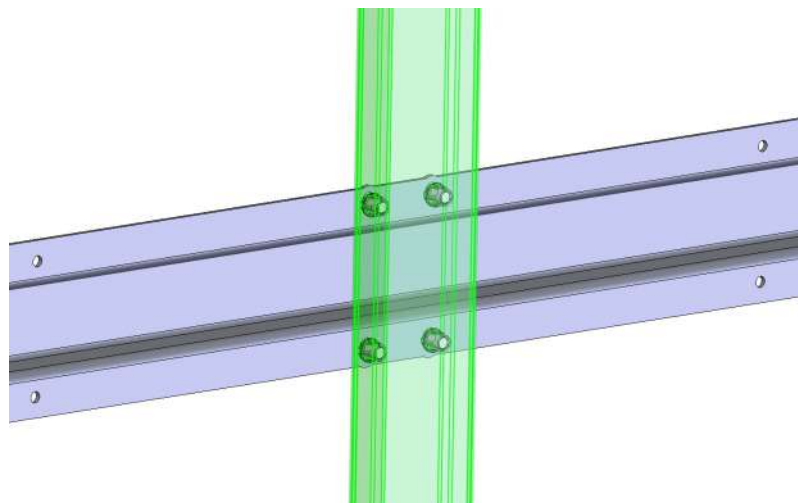
Tighten with bolts M8x20 and nuts as shown in Pic. 2.11.



Pic. 2.11

### 2.3. Installation of the central guide rail

Install the central guide rail to the guide rails' cross beams. See Pic. 2.12. Threaded rivets and screws M8x16 are used for this.

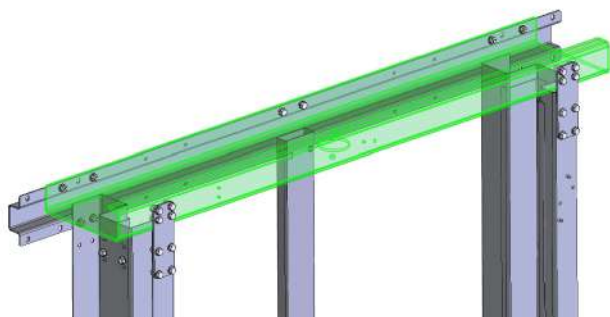


Pic. 2.12

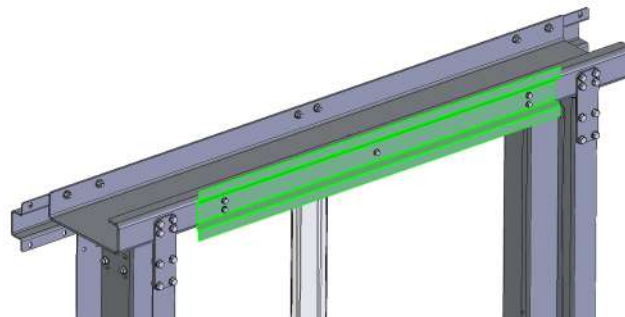
### 2.4. Installation of spindle beam

Place the spindle beam on the top of the guide rails and fix as it is shown in picture 2.13. Use bolts M8 for fixation with transverse beam and plates in the front.

We recommend that you also attach a partition wall mounting plate at the same time. Pic. 2.14. Use hex flange bolt M6x16 without nuts.



Pic. 2.13



Pic. 2.14

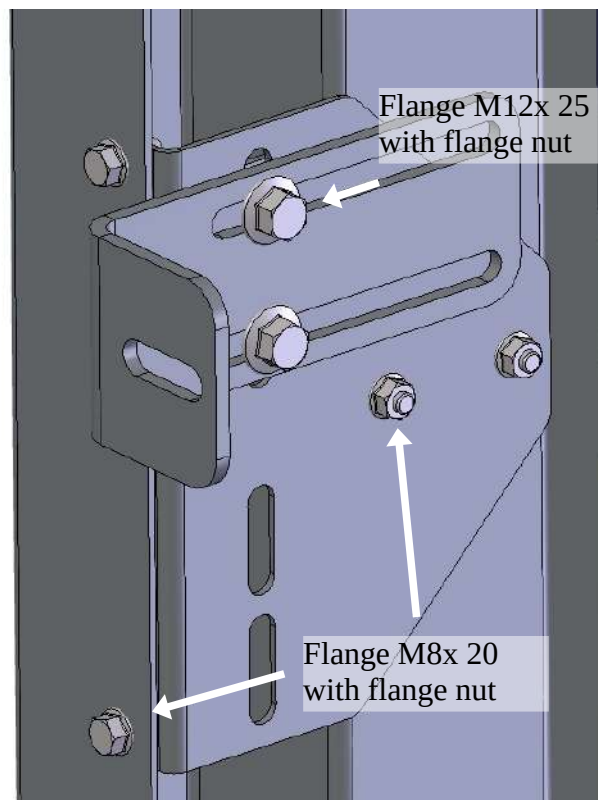
## 2.5. Fixing to the wall

Before final fixing of the guide rails to the wall make sure that they are perfectly parallel, vertically straight and not tilted to the sides. Perform all checks using laser either bubble level.

If a lift doesn't have an external enclosure wall on the B side, the structure can be attached and fixed to a wall (either other supporting structure) and later on. However, if there is an external B-wall, then the B-wall panels shall be installed before fixing the structure to the wall, as it may be difficult to fit the rear wall panels afterwards.

Once the structure is aligned and is in perfect and final position, it can be fixed to a supporting wall. Fixing method is shown in Pic. 2.15. It include the L-shaped corner elements and an intermediate plate that is fixed on the guide rail. M8 hex bolts are to be used for fixing the elements to the guide rails. The M12 bolts with nuts are used for fixing of corner element.

Select anchors in advance with advice of and expert for fixing to the wall depending on the type of wall. The anchors supplied by the manufacturer are intended for a silicate masonry wall.

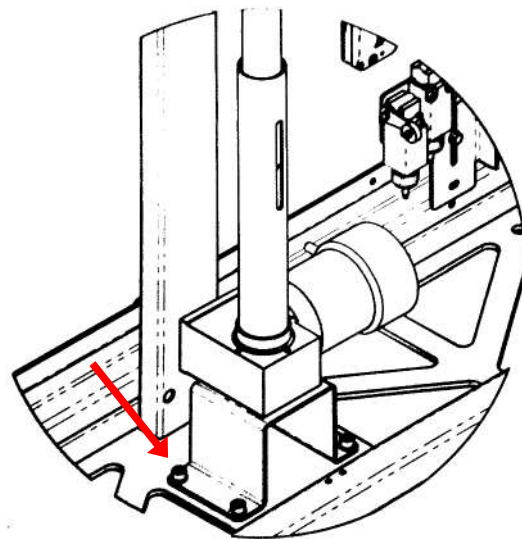


Pic. 2.15

### 3. Installation of an emergency lowering unit

Prior the assembly of the main driving screw, instal an electrical emergency lowering unit as it serves as lower fixing point for main driving screw.

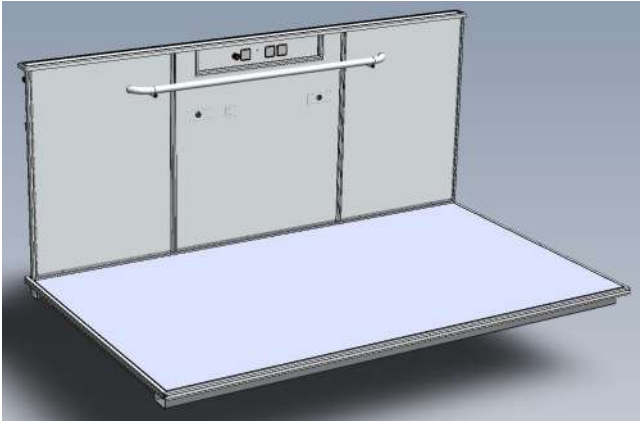
Place the lowering unit bracket on the base frame, match the mounting holes and secure with socket head cap M8 x12 screws.



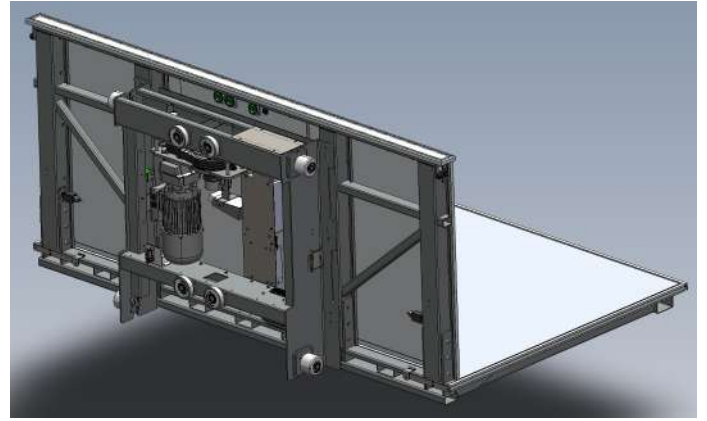
Pic. 3.1

## 4. Fitting the platform

General layout of the assembled platform is shown in Pic. 4.1. The back view of the platform is shown in Pic. 4.2. If platform was received in assembled state, in order to assemble it with the guide rails, it is necessary to temporarily disassemble it by separating the platform sole and the platform frame from the underframe. See Pics. 4.3 and 4.4.

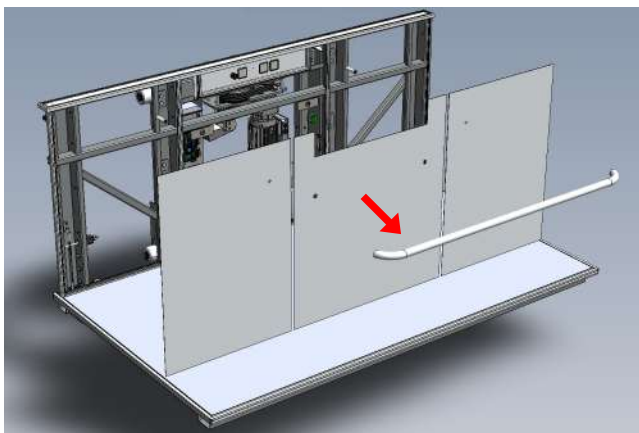


Pic. 4.1.

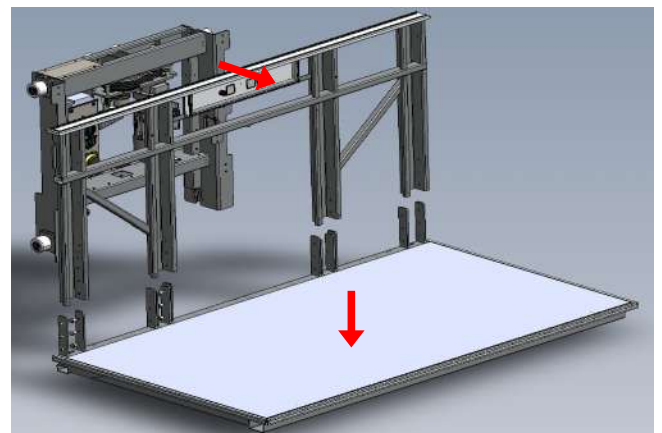


Pic. 4.2.

First remove handle and front panels from the platform. See Pic. 4.3.



Pic. 4.3.



Pic. 4.4.

Separation of the platform sole is done by unscrewing the three M12 screws at each place. In total at 8 places.



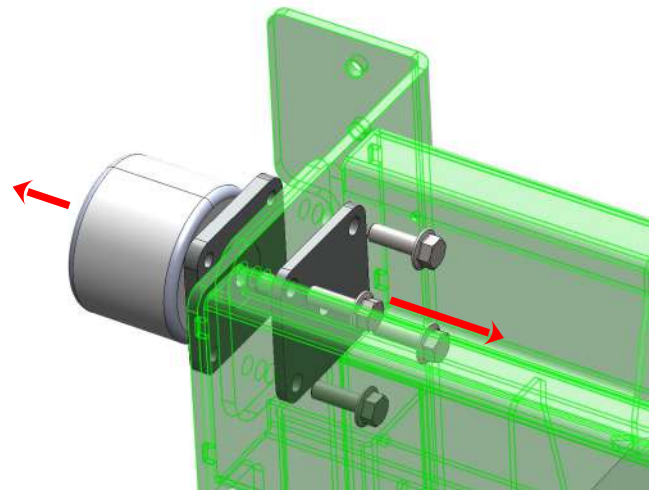
Pic. 4.5

Separation of the platform frame from the support frame is done by unscrewing two M12 screws at 3 places of each of two struts of the platform frame.



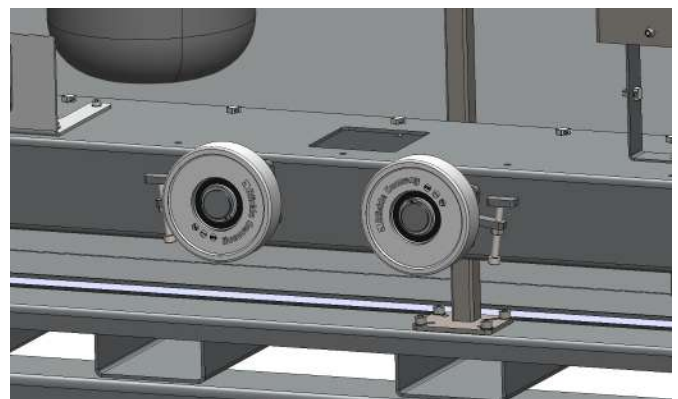
Pic. 4.6

Remove the wheel assemblies from the sides of the underframe by removing four M8 screws each unit. See Pic. 4.7.



Pic. 4.7

The wheels of the central guide rail are adjustable. When installing the frame, it is recommended to loosen them slightly, after installing the frame, these wheels should be brought to the beam so that there is no looseness. Pic. 4.8. Do not tighten too much.



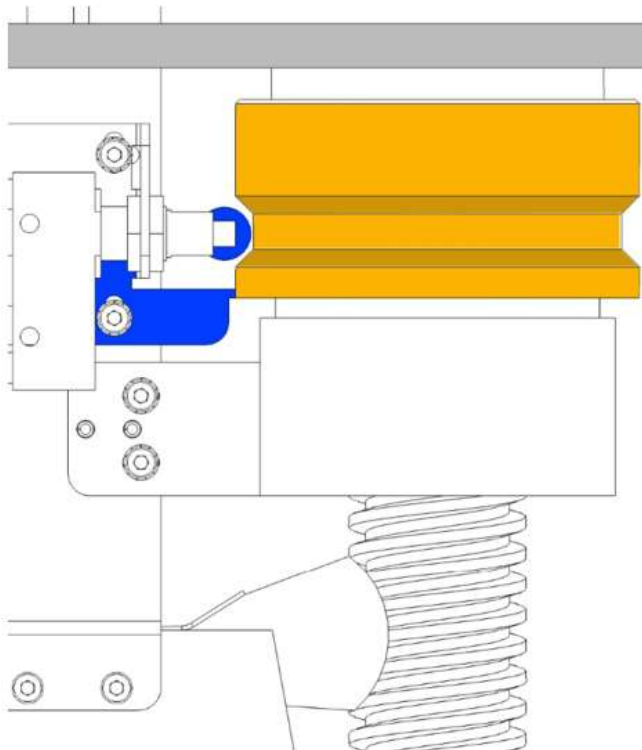
Pic. 4.8

Important! In order to reassemble the platform, you must **first** connect the platform sole to the platform frame. And only then should this assembly be brought to the subframe on the rails and screwed in place.

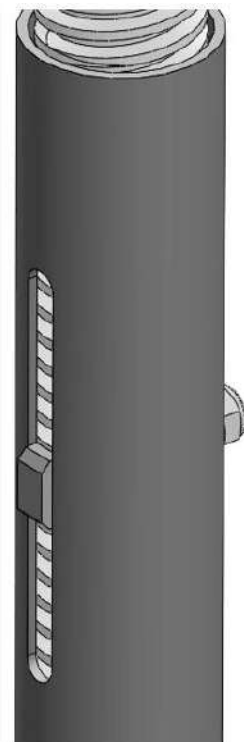
## 5. Assembly and installation of driving screw

When platform is placed between the guide rails and main driving nut hole is aligned with emergency lowering mechanism hole for screw, insert the lower part of the screw by rotating it clockwise. Be careful and hold the safety nut aligned with the mark flag as it shown on the Pic 5.1.

Safety nut (marked in yellow) and indicator flag edge (marked in blue) must be perfectly aligned as it's shown in the picture. The main driving screw must be able to spin freely without major resistance. If not, please remove it and try inserting it once again, until you reach the perfect placement of the end switch wheel (marked in blue). Continue spinning the screw until it enters the mounting hole of the emergency lowering unit. Align the hole in screw end with elongated hole of the lowering unit tube and fix with the screw using bolt and nut, see Pic 5.2.



Pic 5.1



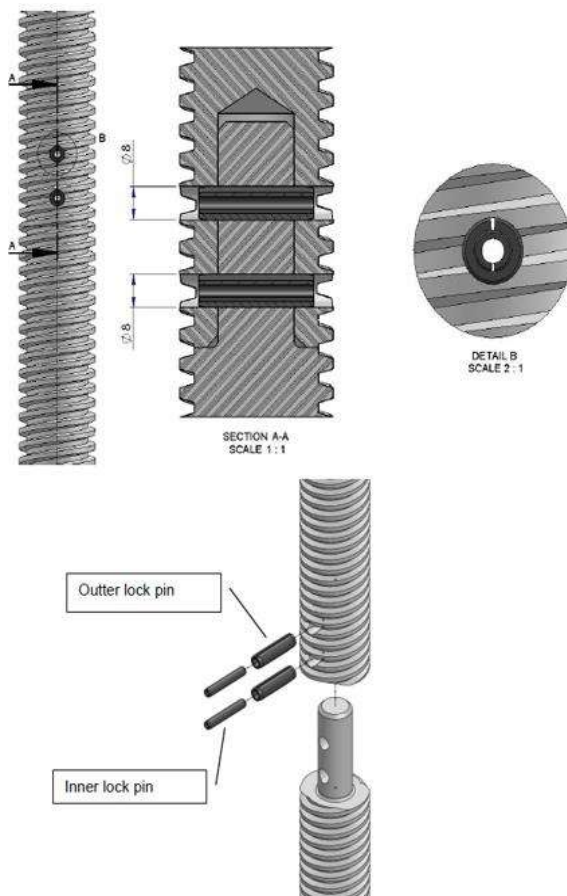
Pic 5.2

When the lower side of screw is fixed, connect the rest parts of the screw together. Joining it all way up till top cross beam of the guide rails.

For connection of two parts of the main driving screw, carefully align 2 parts so that there would be no unevenness on the thread, each joint is marked with different color paint from one side, so it's enough to combine the mark for accurate match. When it's aligned put the fixation pins as it shown on the Pic 5.3.

In the case if screw's length is over 10 meters, all the joint's above 10 meters mark are additionally threaded. And the driving screw joint can have ~2mm gap between two parts cut thread. In this case acc. to Pic 5.4 align perfectly paint marks and fixation pin holes.

Use special punch to drive the pins in. Make sure that they are perfectly fitting and not sticking out of thread root, as imperfectly inserted pin will scratch the main driving nut, this will cause it's very quickly wear out. If the surface of thread got scratched a bit, please use a small file to fix the scratch, make sure that there are no sharp edges left.

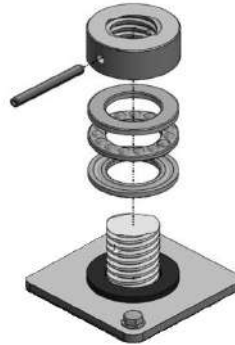


Pic 5.3



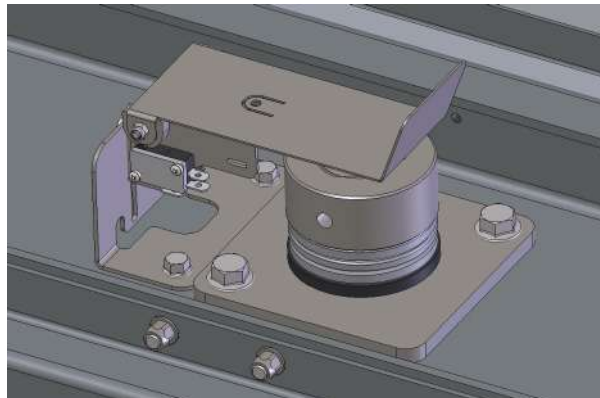
Pic 5.4

When the upper segment of main driving screw is inserted to the hole of upper beam and connected with the rest of the screw, make sure that the screw is straight, put a support bearing between plastic inlay of the upper beam and upper nut of screw. Put on the upper nut. Make sure the painted mark(arrow) on top of nut and screw is aligned. Lock it in place with pin Pic. 5.5.



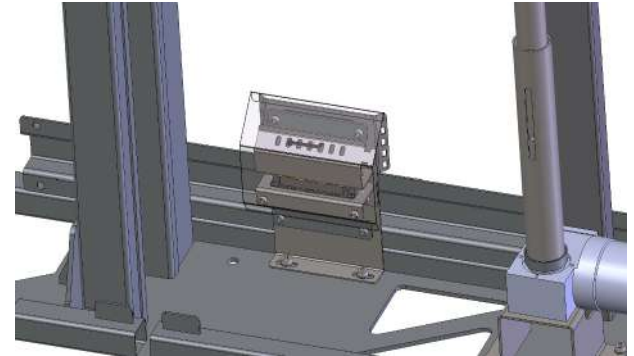
Pic. 5.5

Attach and connect the screw's anti lift sensor assembly.



## 6. Installation of the trailing cable

Before starting installing the trailing cable, first attach the lower cable holder. Refer to the drawing provided on Pic 6.1.

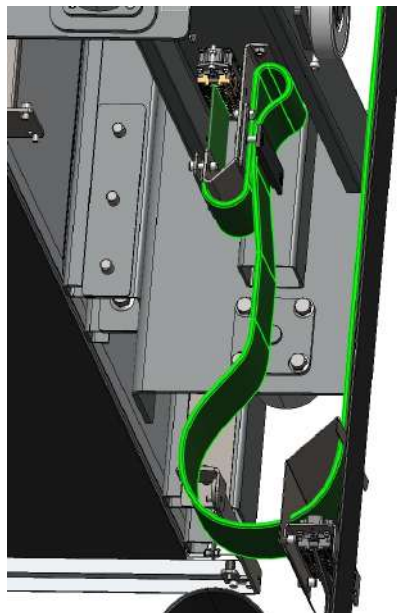


Pic 6.1

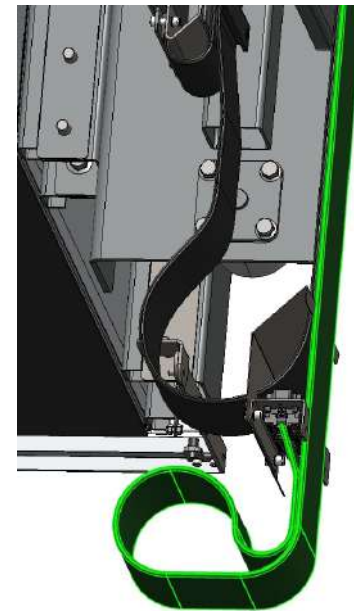
Suspension height depends on the lifting height. Refer to the guide rail structure drawing.

Fitting must be precise so both pieces of folded cable would be parallel one to another.

Upper cable's suspension point if mounted precisely, matches with cable end attachment on the platform. Cable attachment to platform is shown on the Pic.6.2. Cables fixing at the bottom of the shaft is shown on the Pic 6.3.



Pic 6.2



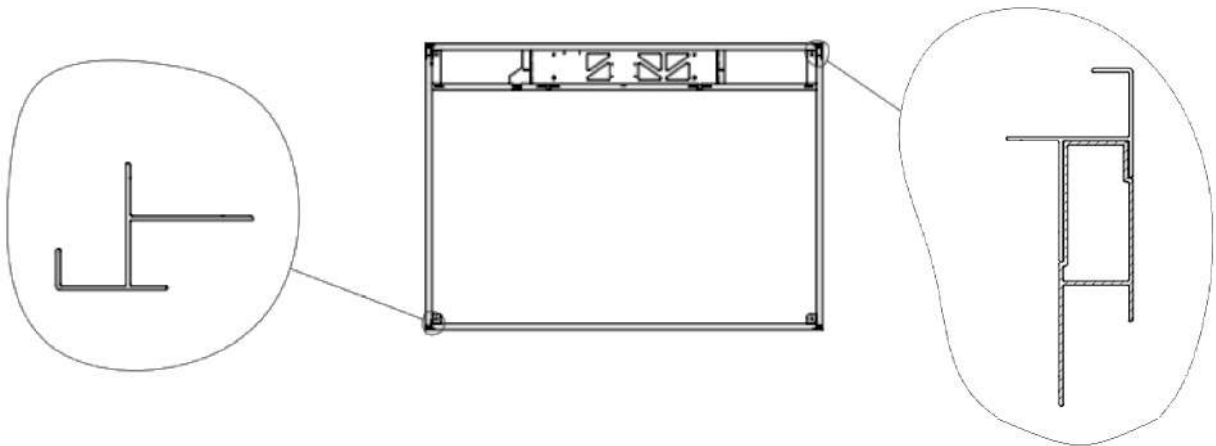
Pic 6.3

## 6.1. Installation of enclosure's corner elements

Arrange the corner profiles at the corners of the bottom frame in the manner as shown in the picture 6.5.

The layout of the profiles is also shown in the guide rail structure drawing.

Profiles located closer to the machine room consist of two parts that must be connected in advance fixing with 4 mm diameter rivets, and placing every 30 - 40 cm through the groove of the covering part from the inside.



Pic. 6.5

At the bottom, rivet the corner profiles to the bottom frame as shown in Figure 6.5. Use rivets with diameter 4 mm.

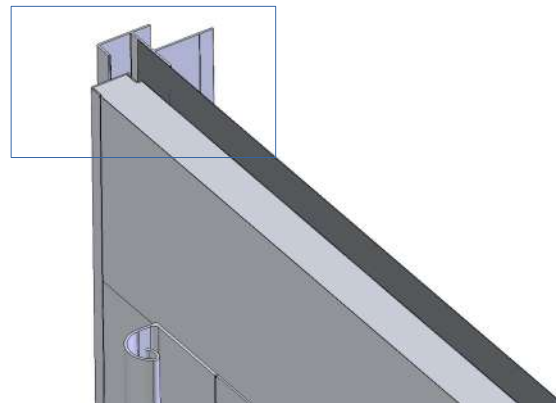


Pic. 6.6

The following profiles are connected by fitting and reinforced with sandwich (either glass) panels.

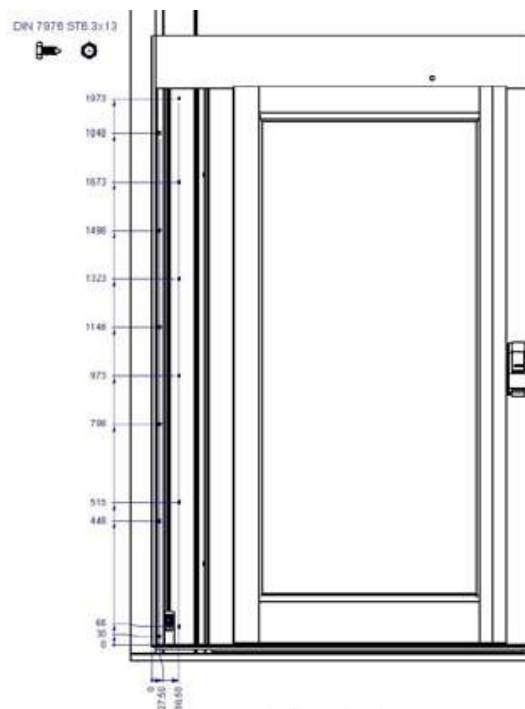
## 7. Door installation

The door is installed after the side profiles are installed.  
 Insert the door between the corner profiles up to the deeper supporting surface. See pic. 7.1.



Pic. 7.1.

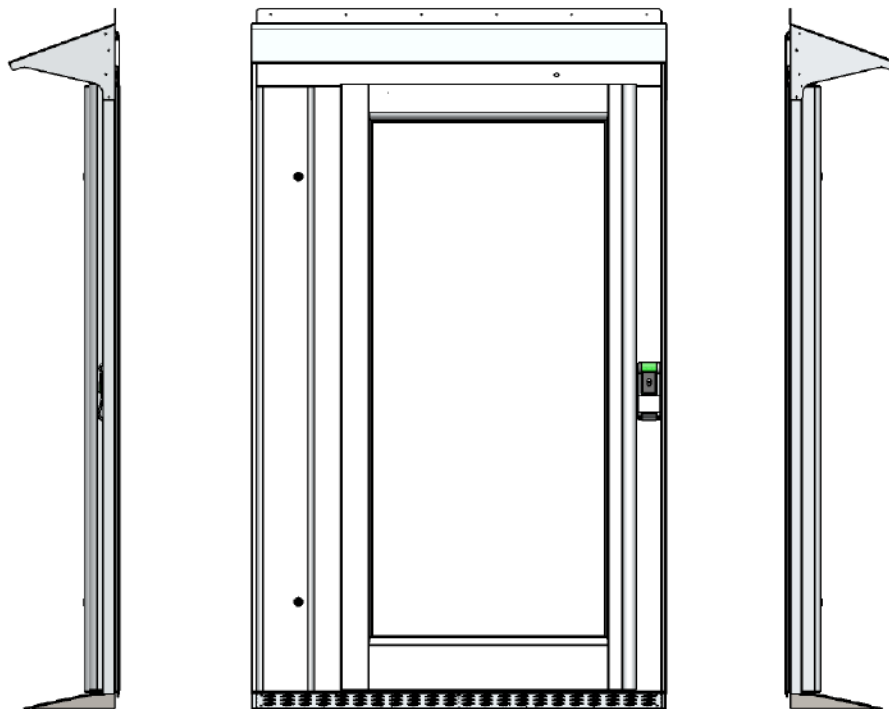
Secure the door with 4 mm diameter rivets from the inside, through the groove on the corner profiles. Pic. 7.2.



Pic. 7.2.

## 7.1. Door canopy installation

In case of outdoor lift, all doors that are exposed to outside environment may have a canopy. The canopy must be applied using silicone sealant. Before applying the sealant, clean the surface of canopy and lift, degrease it using isopropyl alcohol or some other none aggressive cleaner, don't use acetone as it can damage the plastic canopy and painted surface of the lift panels. Canopy has pre-drilled holes for 3.2 mm diameter rivets, drill corresponding holes in lift's surfaces trough them and apply the rivets. General view of the door with canopy is shown on the picture below.



## 8. Assembly of an enclosure

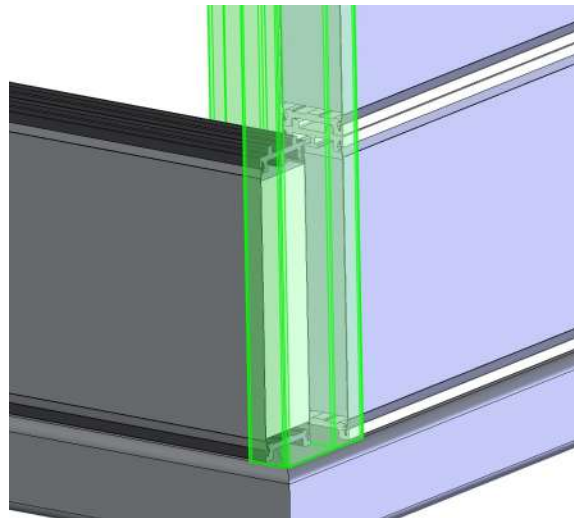
Start assembling the lift enclosure by installing the sandwich panels with the height equal to the depth of the pit.

Place the panel under the downstairs door as well, before installing the door.

Continue installing the panels. Refer to the general drawing.

Note that the width of panels is smaller than the distance between the edges of corner profiles, so that panel can be inserted from the side.

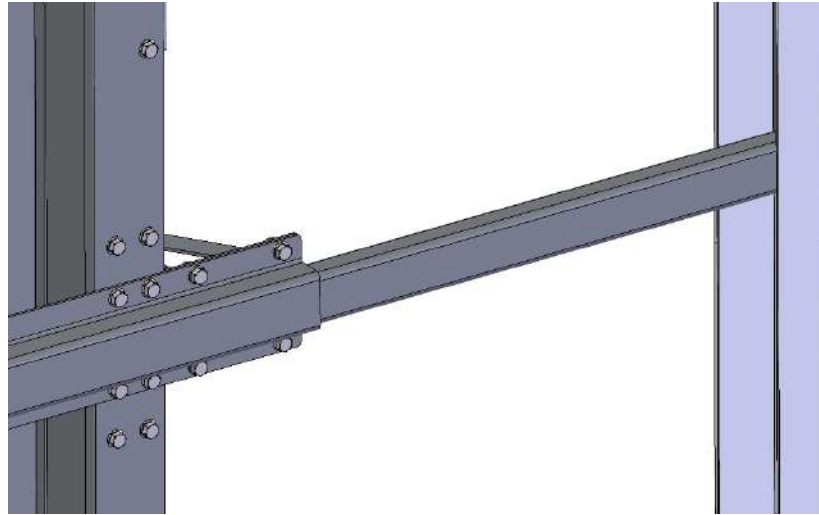
After inserting the panel, align its position so that it overlaps the corner profiles by approximately the same distances and fasten panel with 4 mm diameter rivets every 10 cm, from the inside.



Pic. 8.1.

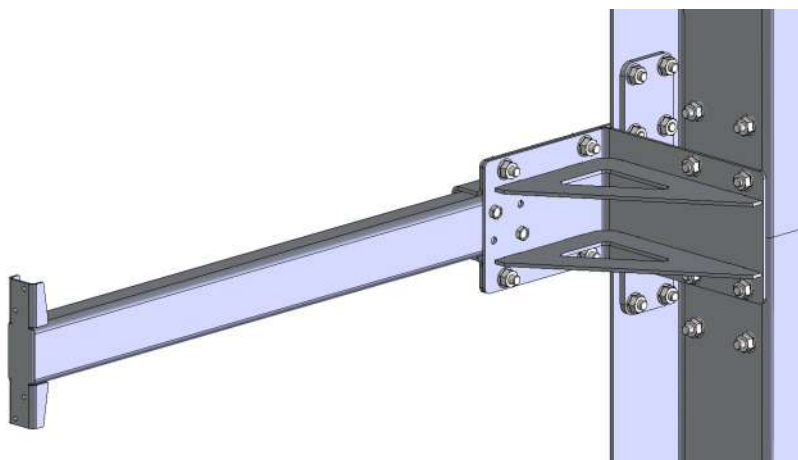
Note that all panels are supplied full height, so in some areas, such as under doors, near ceilings and under sloping roofs, you will need to cut the panels to the required height or angle at site. Carefully measure the required dimensions before cut.

The corner profiles near the machine room are interconnected with the guide rail structure via special short insertable crossbars. Pic. 8.2.



Pic. 8.2.

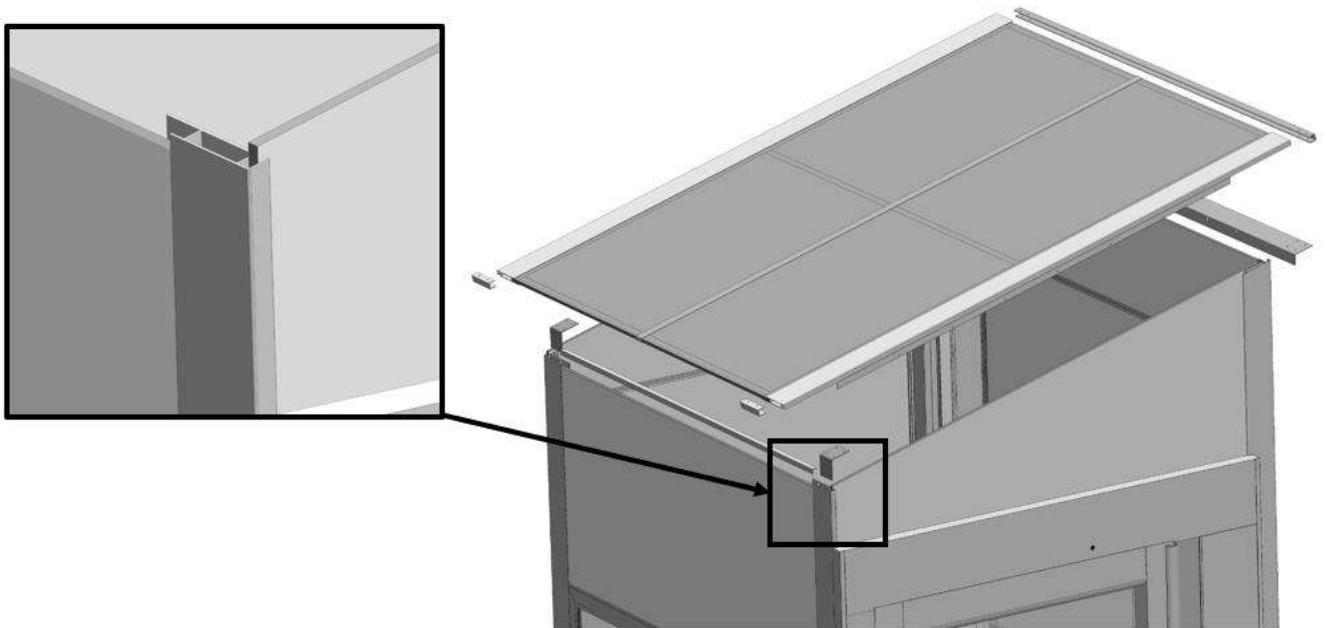
To the rail structure fix with hexagon head self tapping screws ST6.3x13, and rivets with corner profiles. Pic. 8.3.



Pic. 8.3.

## 9. Roof assembly (Outdoor installation)

Lifts for outdoor application come with roof which depending on project can be oriented multiple ways and have various tilt angle. The top segments of the corner profiles already come pre-cut to perfectly match project's design although the top sandwich panels must be trimmed to fit at place. General view of roof assembly and elements positioning is shown on Pic 9.1



Pic 9.1

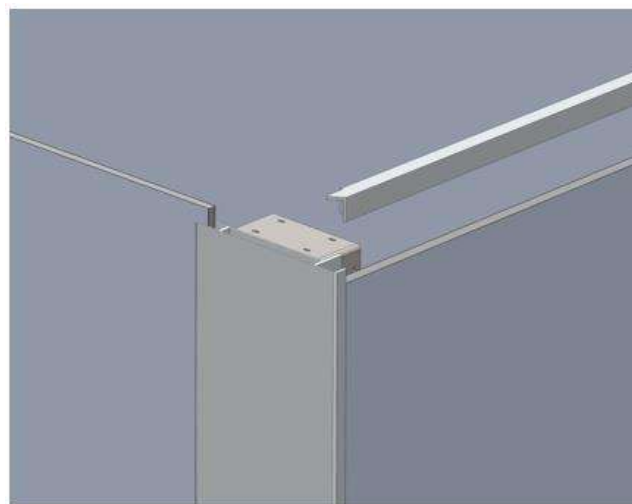
Please note that all the roof elements must be applied to place using silicone sealant (provided with lift assembly kit), this will assure better sealing of joints between the roof elements.

Sandwich panels, which has to be trimmed to match the angle of the roof tilt, must be cut leaving 10 mm excess so its edge would be 10 mm higher than corner profiles edge. Panels on other two sides must be trimmed 10 mm lower than corner profile's edge. Pic 9.1.

We strongly recommend to leave the top sandwich panels without fixing till the roof will be placed at place, as if there is error in shaft assembly, unsecured sandwich panels will allow to make fine adjustments for the roof to fit at the place.

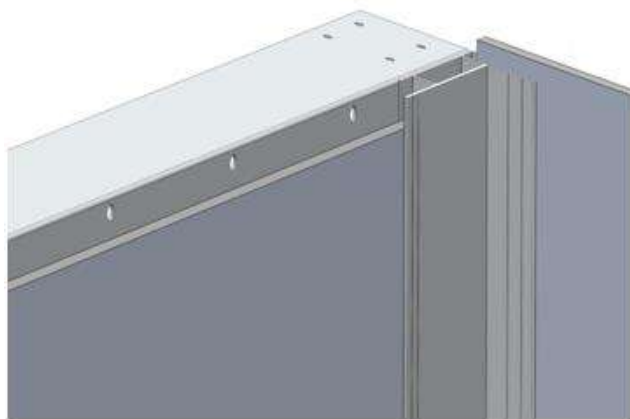
Put a layer of silicon inside the gap of profile that must be placed at the lower side of the roof and applied it as shown on the Pic 9.2

When the profile is fitted to place, secure it from the inner side of shaft to the sandwich profile with 3.2 mm rivets. applying a rivet approximately each 190 mm

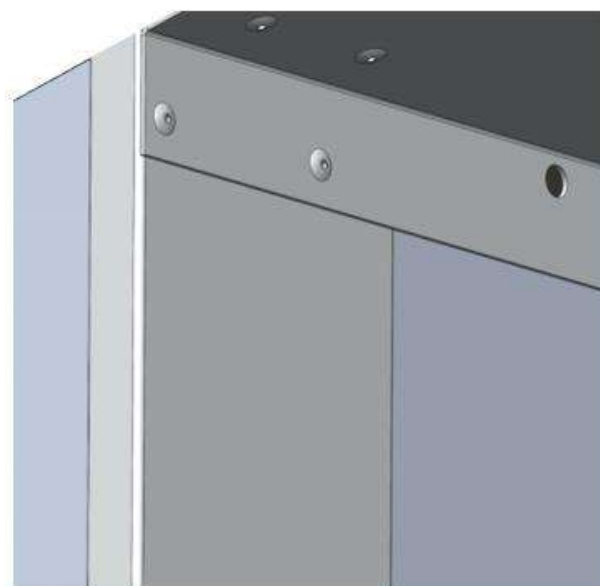


**Pic 9.2**

Apply "L" shaped profile to the sandwich panel which is on higher side of the roof. Put the layer of silicone near the edge of sandwich panel. Pic 9.3. Secure the profile to corner profiles using 4 mm diameter rivets, from both ends as it shown on the Pic 9.4.

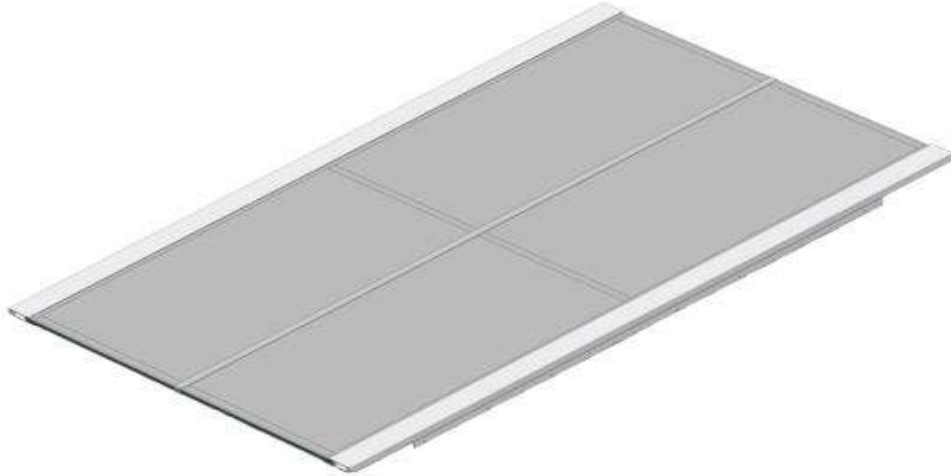


**Pic 9.3**



**Pic 9.4**

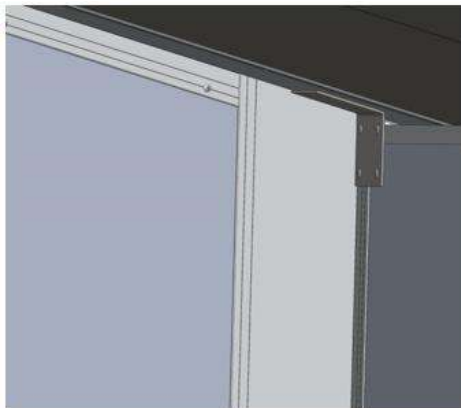
Apply side profiles of roof panel to the roof Pic 9.5. Put a layer of silicone inside the gap of profile. Secure the profiles to the roof panel with 4 mm diameter rivets. The rivets must be applied from inner side of the shaft along the edge of profile, each 190 mm.



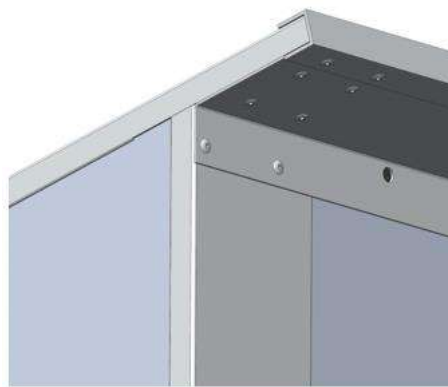
Pic 9.5

Before placing the roof on top of the shaft, please apply a layer of silicon inside the profile's gap. Mount the roof to place. As soon as it is well aligned and there are no visual gaps, secure the roof to the side sandwich panels from inside with 3.2 mm diameter rivets.

Place additional reinforcement brackets in the corners of the lower shaft side and secure them to the roof and the shaft using 4 mm diameter rivets Pic 9.6. Finally apply the longer 20x20 "U" profile to upper edge of the roof Pic 9.7 and fix with 4mm diameter rivets.



Pic 9.6



Pic 9.7

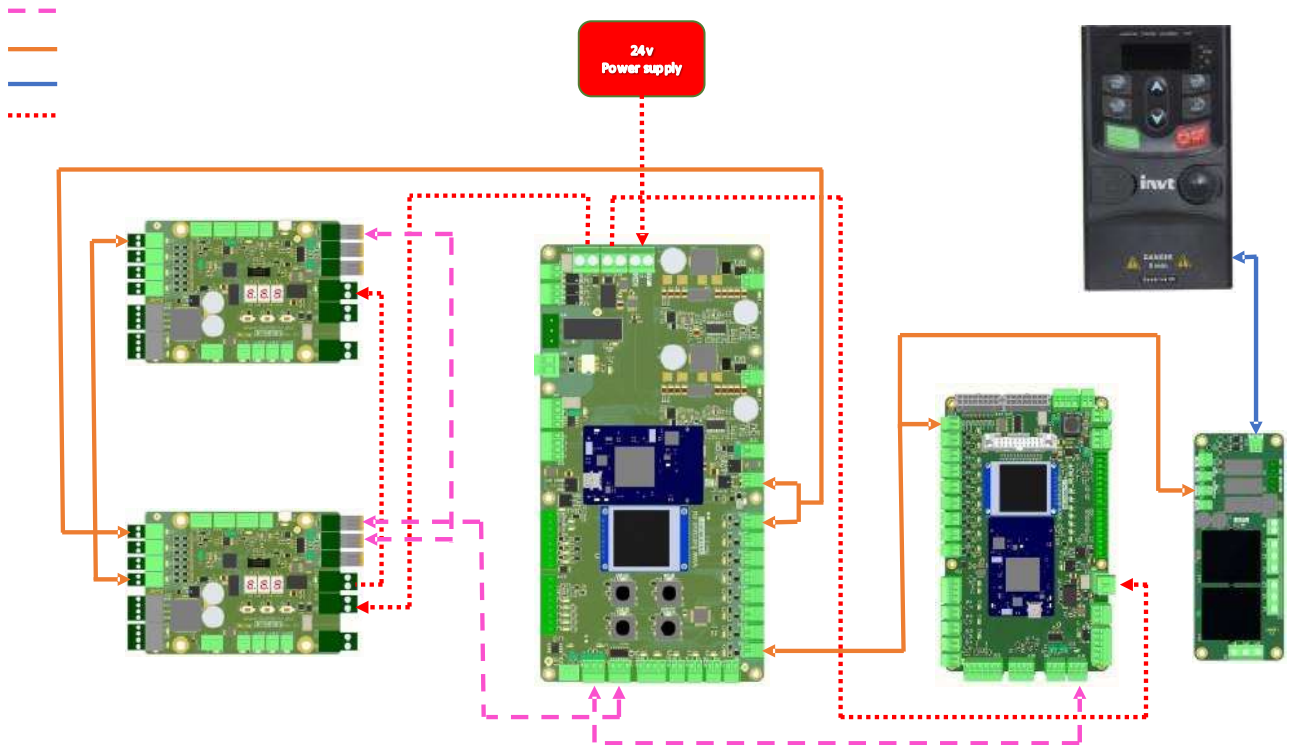


Pic 9.8

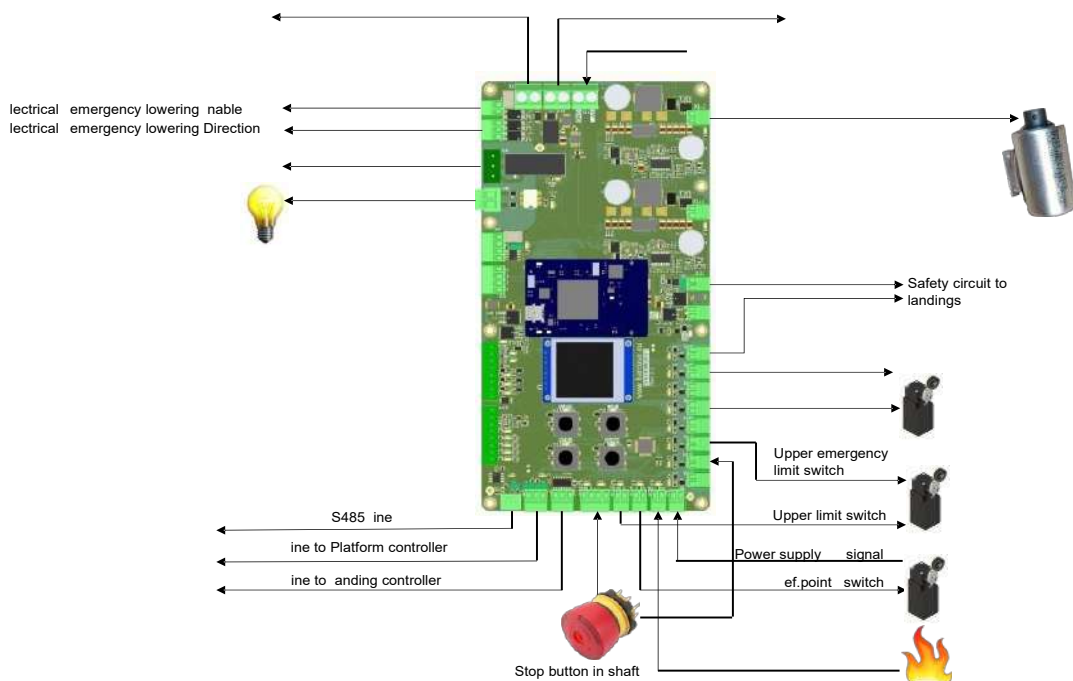
Mount short "U" profiles on lower roof corners and with 4mm diameter rivets lock them in place as it is shown at the Pic 9.8

## 10. Wiring and cable management

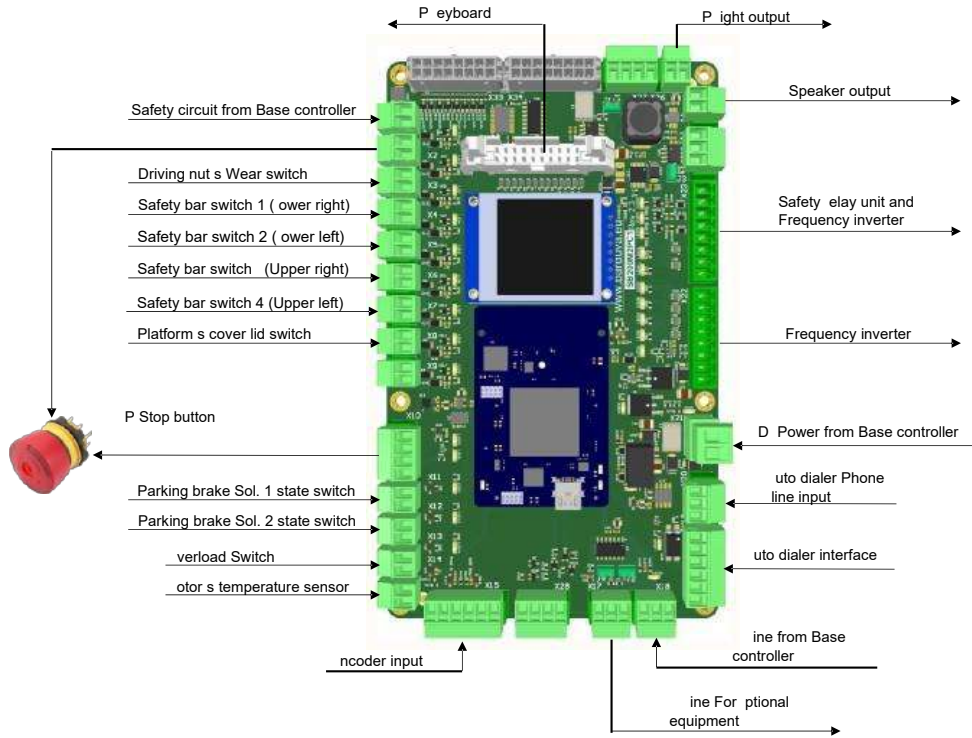
### Connections between all PCBs



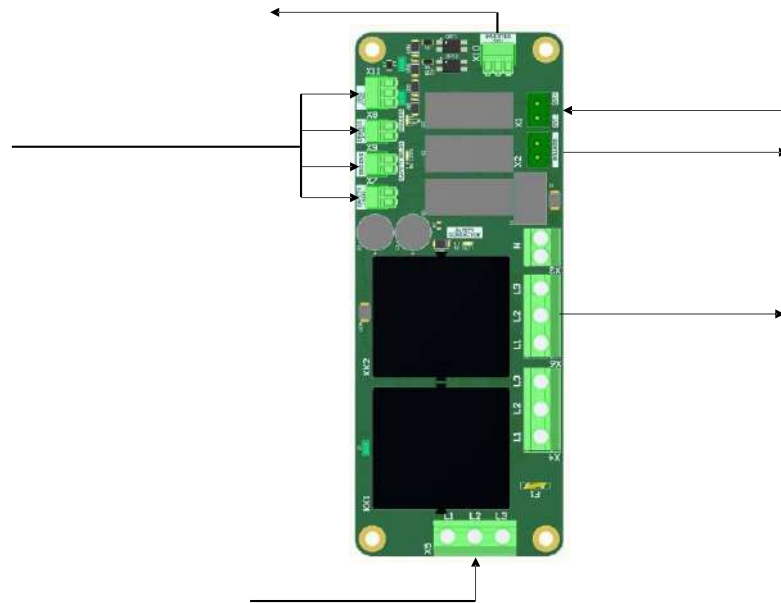
**Base Controller**



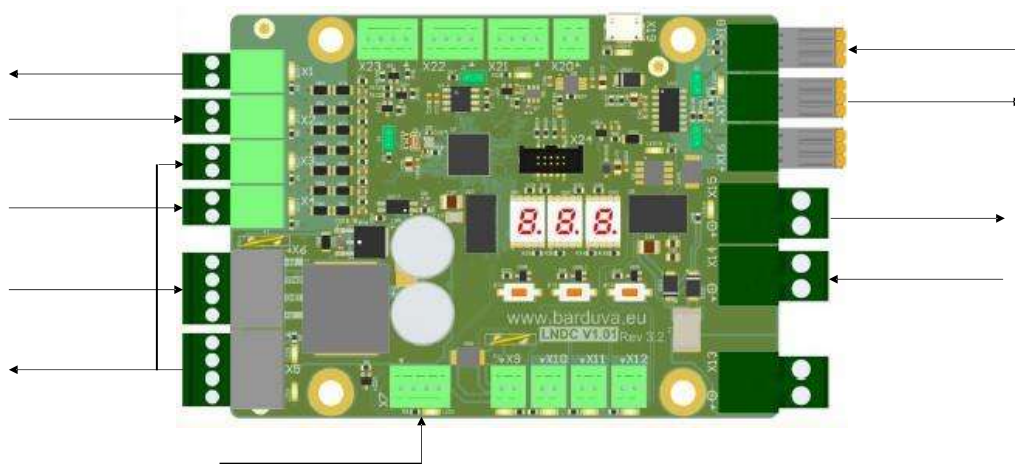
## Platform controller



## Safety relay unit



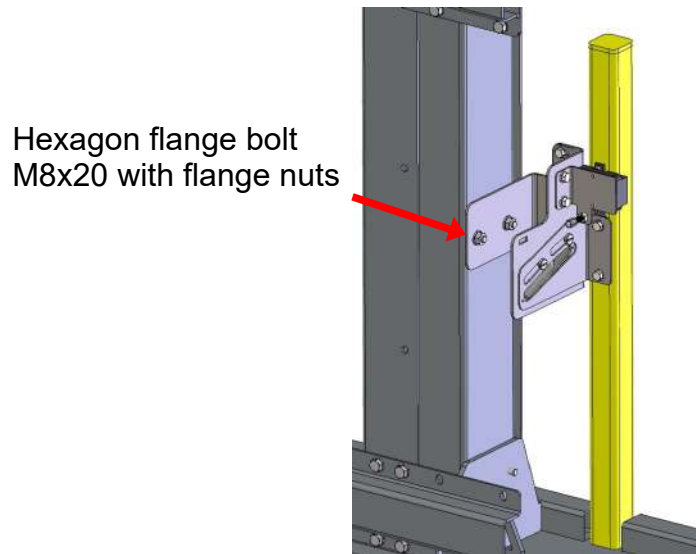
## Door controller



## 11. Installation of pit prop and emergency stop button

### 11.1 Pit prop installation

Put the pit prop unit in the place and attach to guide rail. Pic 11.1. Apply activation mechanism corresponding to pit prop contact pins. Align it on the guide rail so the contacts would freely go out of suspension, and there would be no obstacles for prop Bowden rope to engage and release the pit prop.



Pic. 11.1.

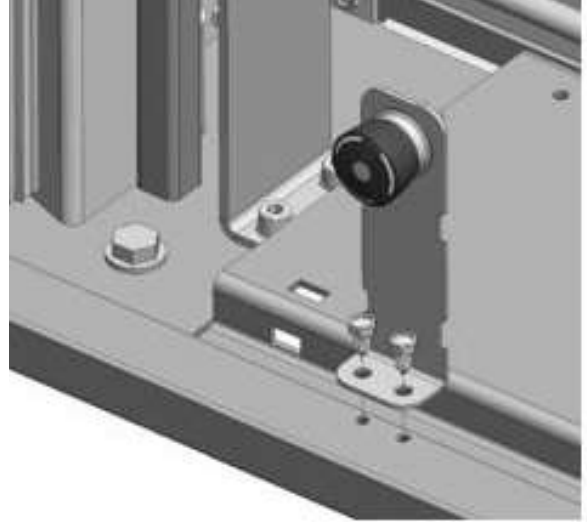
Pass the sensor's cable and the Bowden rope to door electrical compartment trough the opening for cables that is on the bottom of door. Use plastic zip ties and adhesive plastic brackets for cable management. Connect the sensor cable to "Base unit" controller board corresponding connection (refer to lift circuits diagram), attach Bowden rope to pit prop activation Lever. Pic 11.2. Adjust tension of the rope and test the unit.



Pic. 11.2.

## 11.2 Installation of emergency stop button

Attach the stop button ASSY to the base frame, it has pre-drilled holes Pic 11.3. Pass the cable to the door compartment same way as pit prop cable. Connect Stop button cable to dedicated connection on the “Base unit” controller board (Refer to circuits diagram). Use bolts hexagon flange bolt M6x12.



Pic. 11.3.

## 12. Installation and adjustment of activation ramps

Activation ramps must be placed according the lift's landings heights and must be perfectly adjusted so when the platform is at the landing height, platform activator appears a bit bellow the center of ramp contact ASSY. Bottom and top landing ramps have over travel limit and reference switches on them. As the bottom landing height is obtained from the reference switch, adjust the ramp the way that the platform would perfectly stop at bottom landing. The ramp must be inserted between the edges of the guide rails profiles Pic 12.1.



Pic. 12.1

In case if the ramp's sensor is offset left or right release its attachment bolts and move the sensor, so the platform activator would be perfectly centered between the sensor contacts Pic 12.2.



Pic. 12.2.

Activation ramps wiring must be passed through the corresponding holes in the guide rails, corner profiles Pic 12.3, and connected to door controller board, that is placed in upper compartment of the door.



Pic. 12.3.

## 13. Landing preparation for use

### 13.1 Landing height programming

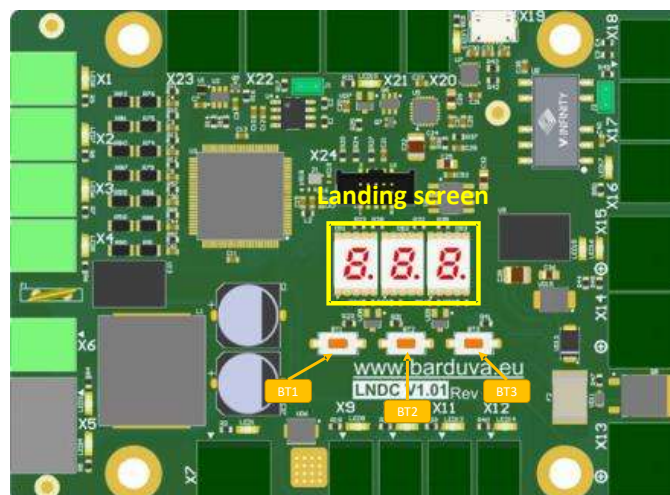
A travel height of each landing must be saved in to a system memory. After assembly of the lift or after changing reference point position, also after replacement of the Base controller board (**A5**) there is required to perform programming of each landing except ground floor. Ground floor is always set at 0.00mm height and must be set with reference switch. When lift powers up and the platform is not in lowest landing zone, platform will go down and it will stop when reference switch is triggered. In case if the reference switch was already triggered (platform was in lowest landing), the platform first will go up for 50-100mm and after that will go down until the reference switch is triggered.

#### Preparation for programming:

1. make sure the reference switch SW07 and Lower limit switch SW03 on the same ramp are in right position. Platform stops in landing level at ground floor;
2. ensure the landing switch SWx1 is installed in each floor and corresponds right level where the platform should stop in landing;
3. ensure door control board shows correct floor number.

#### Setting address of the door controller:

1. Use configuration buttons **BT1**, **BT3** and set up appropriate number on the *control board* inside of each door.
2. Press button **BT2** for no less than 10 seconds to apply the value to the *control board*.



Pic 13.1

Each door control board **LNDC** with version v1.01 or higher must have own unique address in the lift. This is like a number of floors where is used the control board.

### Programming:

1. switch operational mode from *Normal* to *Service / Maintenance*. Press and hold 2sec. **Red** button **SERV** on the Base controller **A5**;
2. move the platform to the required landing, floor level. Use Black buttons **UP** and **DOWN** on the Base controller **A5**. It's also possible to manage the movement from the control operation panel on the platform by ground and next floor buttons;
3. press STOP button **BT11** on the control operation panel of the platform as soon as the platform is in appropriate landing level. Leave it in such state;
4. press a call button on door frame for **more than 5 seconds** and release it, red/green illumination should go off;
5. press the call button for **a moment**. The call button should **blink once in yellow**;
6. press the call button again (it will blink yellow once, as a confirmation) and hold it for **more than 5 seconds** and release it;
7. release the STOP button;
8. program other floors. Repeat steps 2) – 7);
9. move the platform to ground floor and stop it at level around 50 cm over ground landing level;
10. restart the power fully (wait at least 10 seconds after turn OFF). Platform will run initialisation and calibration cycle itself, moves automatically down till the reference point which corresponds ground landing level;
11. test memorised height levels in normal operation;
12. repeat programming procedure if that would be necessary until wanted result achievement.

### 13.2 Door contact and lock latch adjustment

Ensure that closed and locked door would play only a bit. There is recommended to achieve 1-3 mm free play result.

If the door is under power, open and close the door to check if / when it is closed, the door should always touch the upright at the same place (to avoid variation in the latch position).

If the door is closed and the lock not under power, you should operate the lock using triangular key. While locking and unlocking, the lock must remain lightly and smoothly, and the bolt should move freely.

After door installation always adjust door contact and lock.

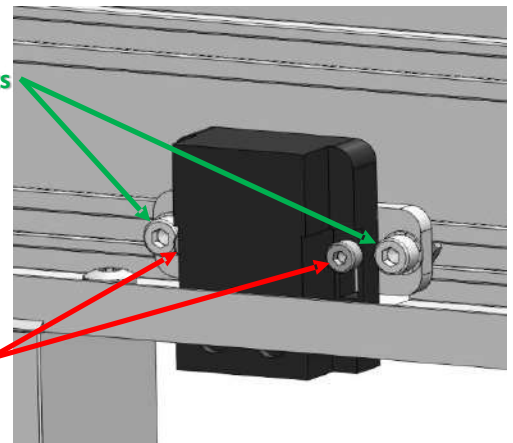
#### Door contact adjustment:

##### A) Contact socket:

Adjust socket position to fit perfect horizontal and vertical

Horizontal adjustment bolts

Vertical adjustment bolts

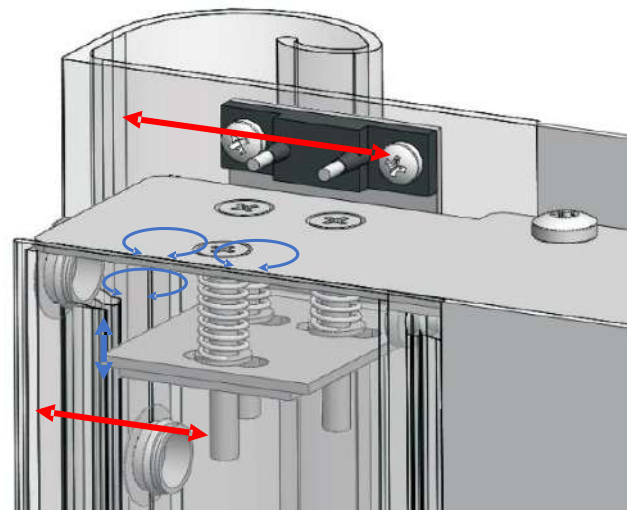


Pic 13.2

##### B) Bridge:

Vertical bridge adjustment

Horizontally you can adjust and slide without releasing fixation bolts

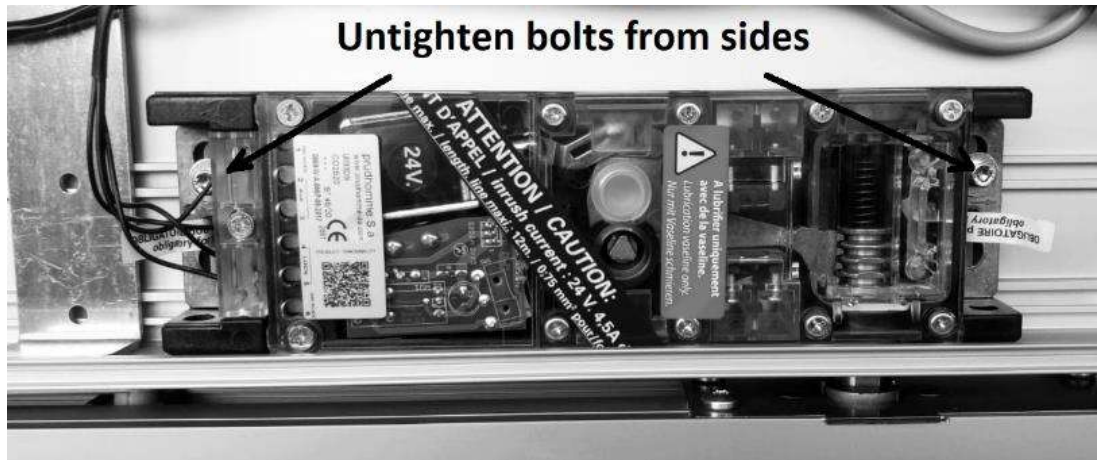


Pic 13.3

**Lock adjustment:**

**A) Lock latch:**

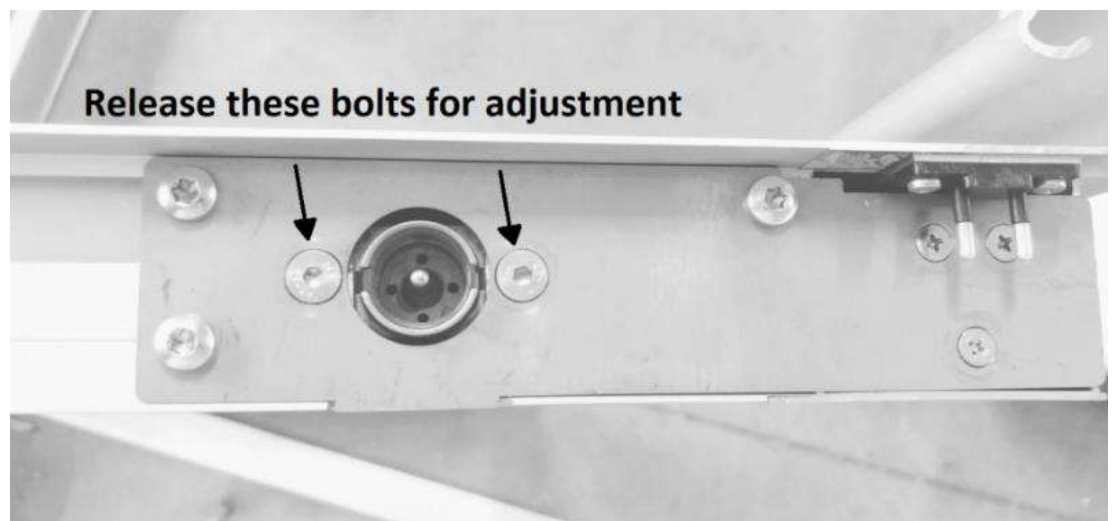
Untighten bolts and adjust position of whole lock unit to fit lock latch. It must move free without any resistance and when lock is powered don't touch latch cup on door. It must be ~1mm clearance between lock latch and cup when lock unit is powered.



Pic 13.4

**B) Lock latch catcher (cup):**

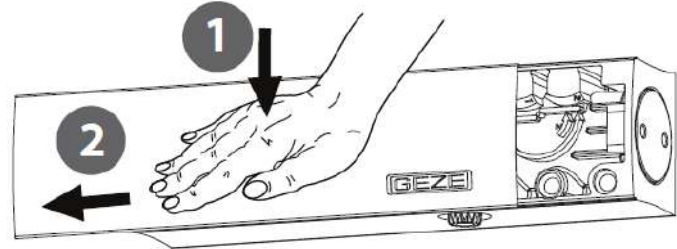
For latch catching cup adjustment you must release bolts from side. When door is fully closed, latch should fit without any resistance. After adjustment don't forget tighten bolts. In cup there is always installed plastic ring, D 'T REMOVE IT. It must be always installed to avoid, too much free play.



Pic 13.5

### 13.3 Hydraulic door closer adjustment

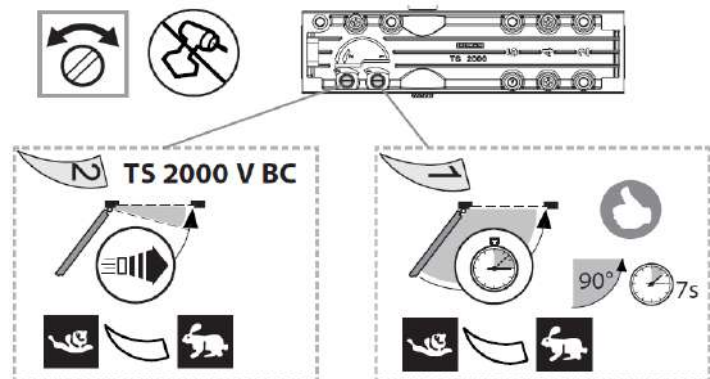
In SB200 we use GEZE hydraulic door closer. It is installed inside the door frame. To get access to it you must open top door cover from inside the shaft. When you can reach it, remove it's cover like it is shown in Pic 13.6



Pic. 13.6

When cover from hydraulic closer are removed you can adjust closing and end soft closing speed. For this step you need slotted type screw driver. **Do not use power tools for that.**

How to adjust speed is shown in Pic 13.7



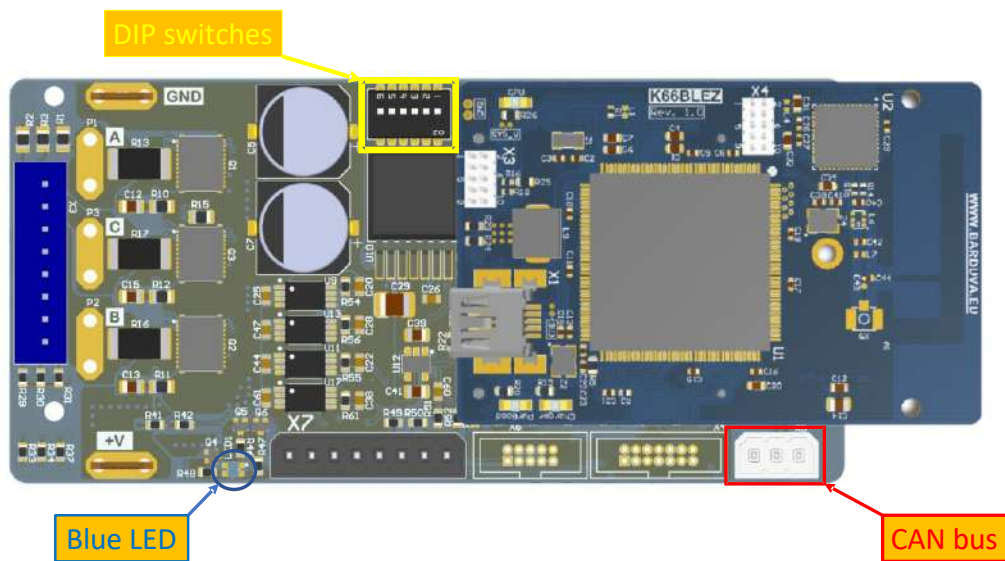
Pic 13.7

### 13.4 BAR Automatic door opener/closer calibration (OPTIONAL)

Steps for auto opener/closer calibration with DIP switches (Controller pcb Pic. 13.8):

1. Power OFF DMC v4.12. Unplug connector.
2. Unplug CAN bus cable.
3. Open door / gate manually.
4. Power ON DMC v4.12. Wait 10 seconds.
5. Enter Calibration mode: Switch micro switch No.1 to opposite position (if it is ON switch it to OFF and vice versa). **Blue** LED must start blinking on main opener/closer pcb.
6. Save data of closed door / gate: Manually close a door completely. Switch micro switch No.2 to opposite position (if it is ON switch it to OFF and vice versa).
7. Save data of opened door at wanted position: Manually open a door and leave it at required opened position. Switch micro switch No.3 to opposite position (if it is ON switch it to OFF and vice versa).

8. Exit from Calibration mode: Switch micro switch No.1 back to position which was at the beginning. Flashing **Blue** LED must turn OFF. Calibration done.
9. Power OFF DMC v4.12. Unplug connector.
10. Close door / gate manually.
11. Return switches 2 and 3 to their original positions.
12. Ensure that all settings on dipswitch are correct (meet floor number, suitable speed level). If auto opener was delivered fitted in to a door just return micro switches to their original position as they were at the beginning.
13. Plug in CAN bus cable.
14. Power ON DMC v4.12. Wait 10 seconds.
15. **Check out operation.** Press call button to open door / gate.

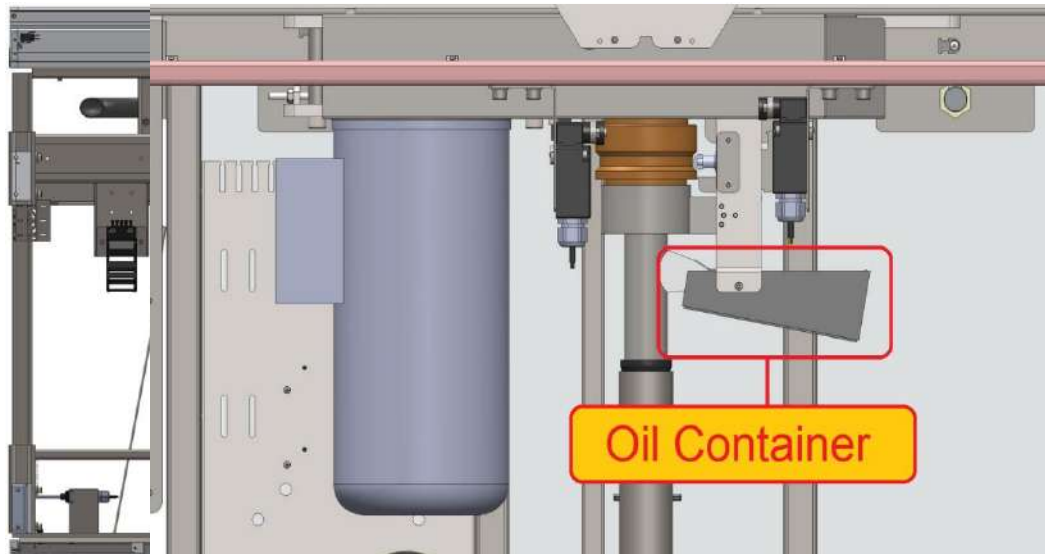


Pic 13.8

## 14. Lubrication

Each platform lift is delivered with 1l synthetic oil 5w-40. Please use this oil for platform lift lubrication. This oil must be used for 2 parts lubrication:

1. Fill driving screw oil container: slide aluminium cover to side and fill container. Wait few minutes and when sponge soak in all oil fill it again. Repeat till container are filled up. For first fill you should add ~0.5l oil to make it full. In Pic. 14.1 oil container are marked in **RED** (Platform are showed from behind).
2. Add oil on guide rails. In Pic 14.2 you can see cut of guide rails horizontally. **Blue** color shows guiderail profile. **Yellow** color shows guide slaid friction plates. Places there these two parts meets each other must be lubed with oil. Take paper towel add oil on it and rub the surface of guide rail all the way from top to the bottom.

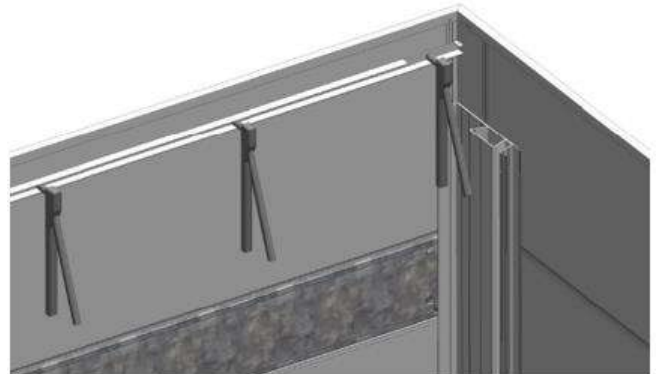


Pic 14.1

**NOTE:** All lubrication must be done before inner wall assembly.

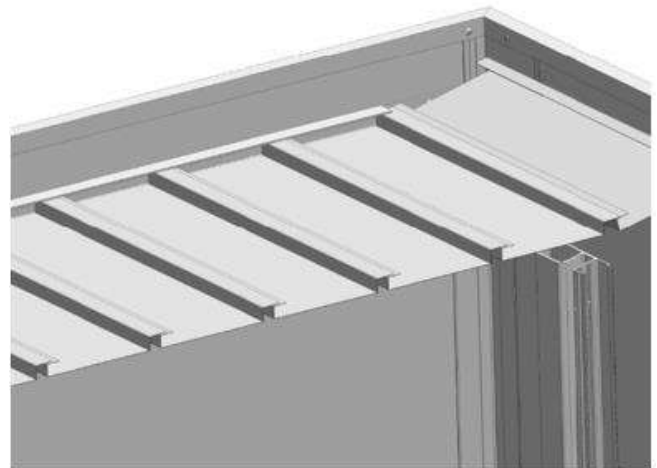
## 15. Ceiling (if any)

Place ceiling support profiles along B and D side on desired height. Drill 3.3 mm diameter holes for rivets and secure the profile Pic 15.1



Pic 15.1

After securing the profiles install the lighting led spots in to the holes in ceiling profiles (if lift comes with shaft lighting option). Start inserting the profiles one by one in such order: 3 blind panels, 1 panel with spots, 3 blind panels, one panel with spots, 3 blind panels ending with a profile that comes with no side “lip” Pic 15.2

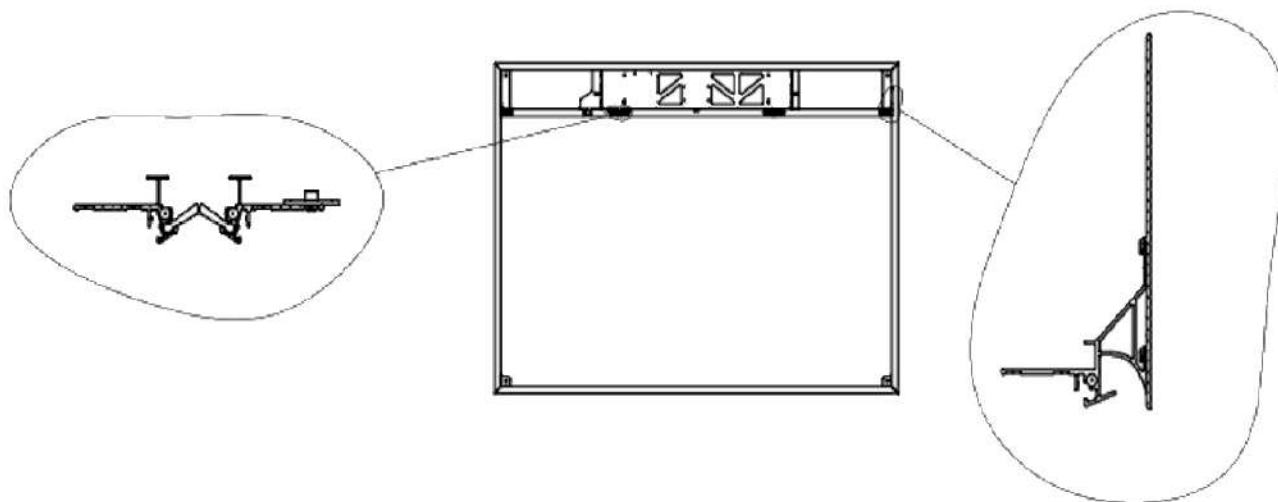


Pic 15.2

Run shaft lighting cable to electrical compartment box together with other cables and connect to dedicated connection on the “Base unit” controller board (refer to circuits diagram).

## 16. Assembly of machine room partition wall

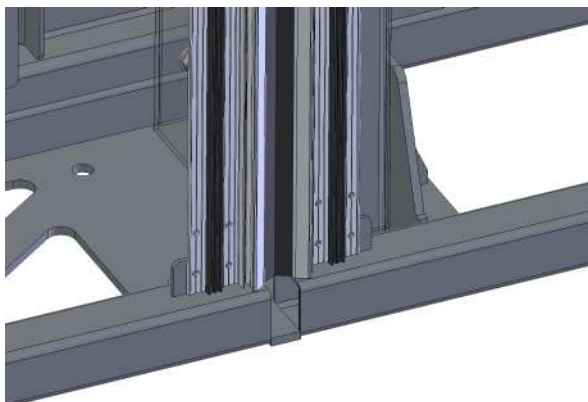
In order to install the machine room partition wall, it is first necessary to install the supporting profiles of the wall as shown in Fig. 16.1.



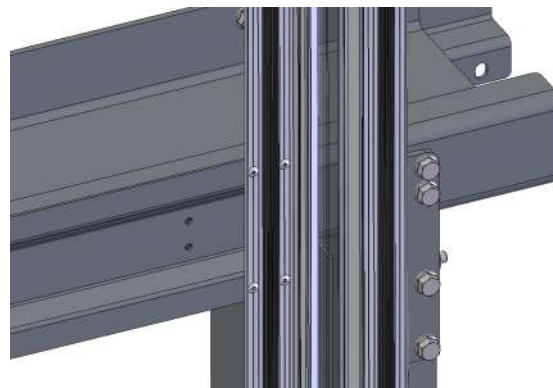
Pic. 16.1.

The inner profiles are fixed to the structure only at the bottom and the top with 4 mm diameter rivets (Pics. 16.2, 16.3).

The more central inner profile at the top should be fastened to the partition wall mounting plate with rivets, 4 mm in diameter.

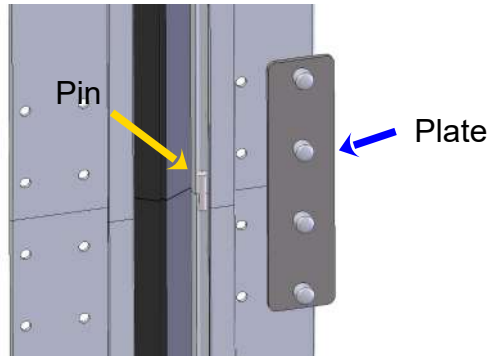


Pic. 16.2.



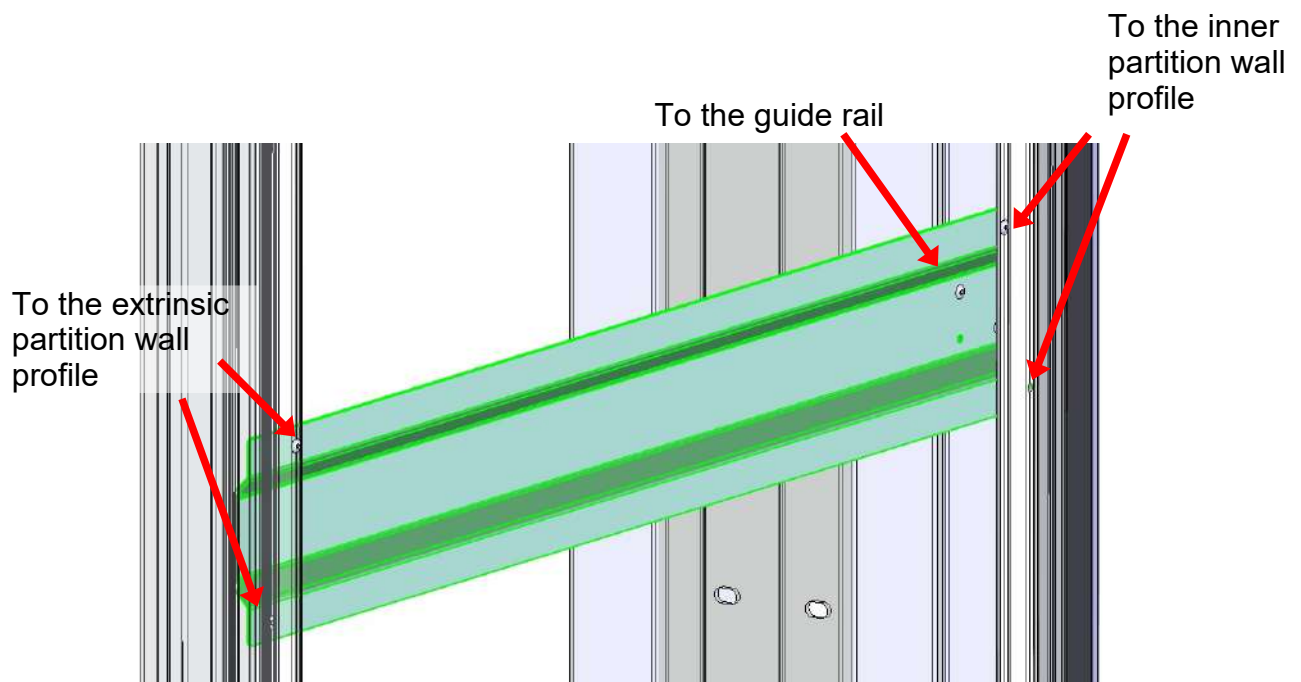
Pic. 16.3.

The more central inner profiles to each other are connected with a pin and reinforced with a Plate from the back with rivets 4 mm in diameter. Pic. 16.4.



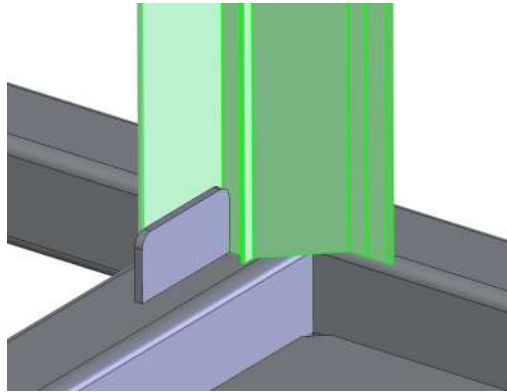
Pic. 16.4.

The inner profiles located further to the sides are connected with a pin and riveted (4 mm) to a short crossbar, which is in turn is to be riveted to the guide rail. Pics. 16.5.



Pic. 16.5.

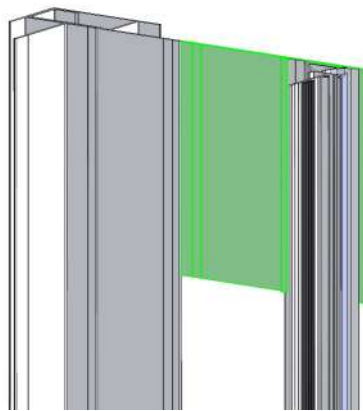
The extrinsic profiles of the partition wall are fastened with rivets to a special plate on the lower frame. Pic. 16.6.



Pic. 16.6.

Subsequent side elements are connected to each other with pins and reinforced with special short crossbars.

The side partition wall profile has an additional profile connecting this profile to the enclosure's corner profiles. Pic. 16.7. However, this profile is skipped at the doors.



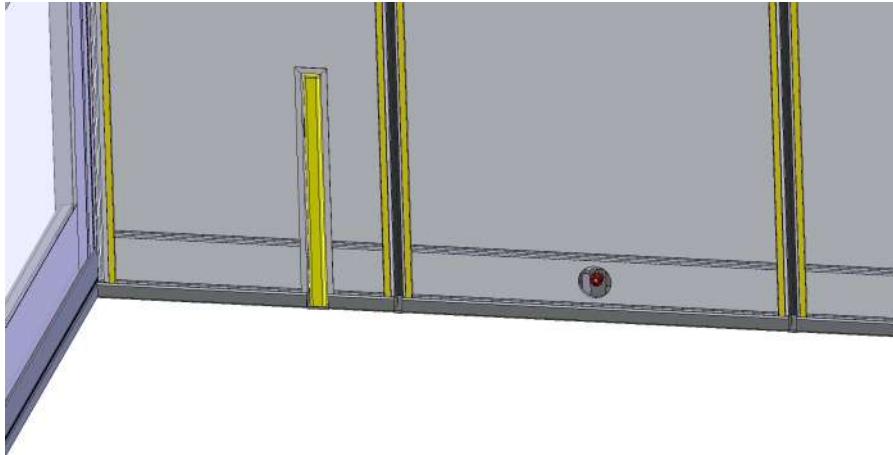
Pic. 16.7.

The arrangement scheme of the elements of this profile is represented in the construction frame drawings.

## 16.1. Installation of partition wall panels

An aperture needs to be cut around the pit prop so that the pit prop can slide out without any obstruction. The edges of the hole are covered with u-shaped aluminium profiles.

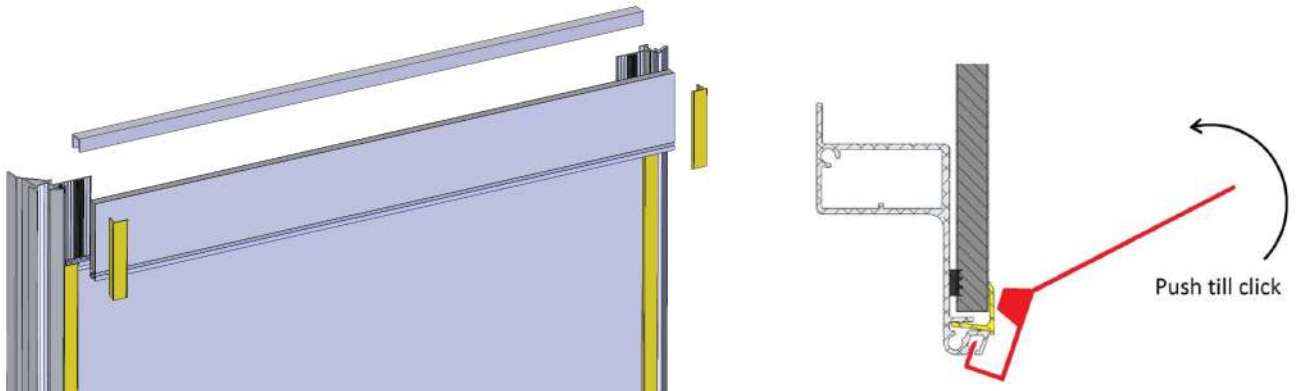
Also a hole for access to the emergency switch. Pic. 16.8.



Pic. 16.8.

Panels are fixed by clamping the fixing angles.

On top panels are covered with U-shaped aluminium profiles. Pic. 16.9.



Pic. 16.9.

