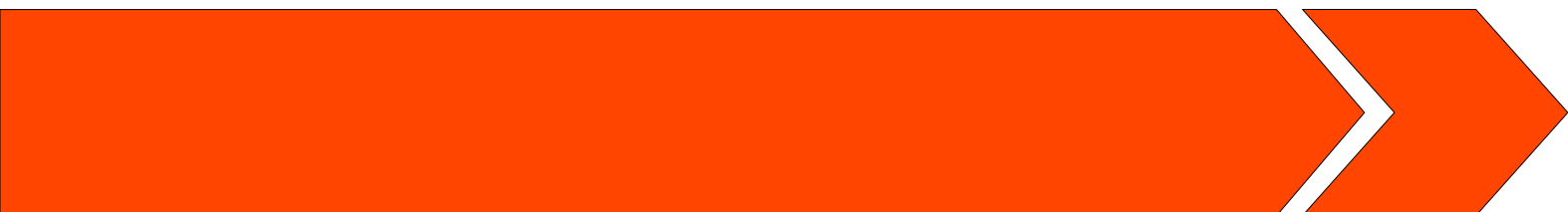
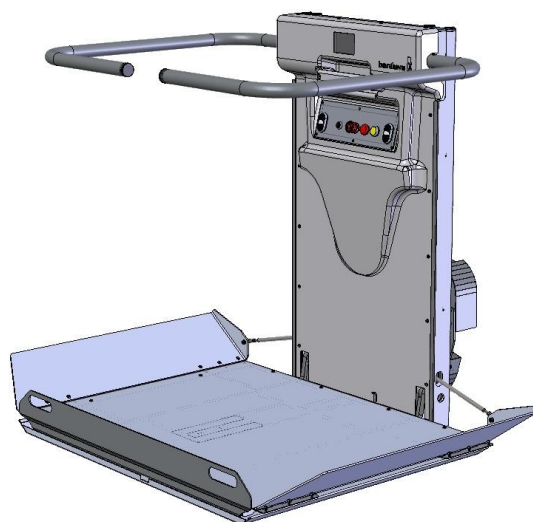


# Stair Lift GRB60

## Installation Manual

INSTRUCTIONS TRANSLATED FROM LITHUANIAN



Revision overview

Revision	Date	Summary of revision
-	15-12-2024	Original release

# Table of Contents

- 1. Important safety instructions .....4
  - 1.1. General ..... 4
  - 1.2. Safety regulations..... 4
  - 1.4. Handling electronic assemblies ..... 4
  - 1.5. Personnel qualifications ..... 4
  - 1.6. Danger notices ..... 4
  - 1.7. Warning signs ..... 5
- 2. Preparation for installation ..... 6
  - 2.1. Attachment surfaces .....6
  - 2.2. Tools and equipment required for installation .....6
  - 2.3. Parts list verification.....6
  - 2.4. Unpacking .....6
- 3. Stairlift explained .....7
  - 3.1. Platform ..... 7
  - 3.2. On board components disposition..... 9
  - 3.3. Guide rail .....10
  - 3.4. Accessories ..... 11
- 4. Installation of rails ..... 12
  - 4.1. Installation of rails on poles .....12
  - 4.2. Installation of guide rails on the wall.....14
- 3. Installation of the platform..... 15
  - 3.1. Adjustment of the loading ramps .....17
  - 3.2. Adjustment of the loading ramps.....18
- 4. Wiring and cable management ..... 19
- 12. DECLARATION OF CONFORMITY..... 23
- 14. ASSEMBLY AND MAINTENANCE RECORDS .....24

# 1. Important safety instructions

## 1.1. General

Please read this manual carefully before installing the stairlift GRB60.

This manual contains an important information on safe installation.

Local, national and on-site regulations regarding safe installations and protection shall be taken into account in addition with this manual.

## 1.2. Safety regulations

Stairlift GRB60 was designed with accordance to EN81-41.

GRB60 may only be operated in perfect working condition, in proper manner, in compliance with the manual and safety regulations.

## 1.4. Handling electronic assemblies

Keep the electronic components in its original packaging until installation to prevent damage.

## 1.5. Personnel qualifications

Only the qualified personnel is allowed to install the lift.

Electrical connection must be done by a competent electrician.

People who are not involved shall not be allowed in the assembling area.

## 1.6. Danger notices

Do not install lift on foundation of unknown strength, first make sure of strength of the base.

Read and understand all the safety warnings before starting the assembly.

Keep hands and feet away from moving parts.

Wear suitable clothing to avoid capture in moving parts of a lift.

Clean up the surrounding area from unnecessary items.

Never remove safety components from a lift.

Discontinue work if safety components are damaged or missing.

Do not modify any parts of the lift without manufacturer's advice.

Disconnect the power source before interrupting work and upon noticing any signs of malfunction.

## 1.7. Warning signs


Prior starting the assembly of a lift and during installation, it must be taken all necessary actions to avoid dangerous and hazardous situations to the persons or the environment.

These personnel must be thoroughly familiar with the instructions contained in this manual and must also be familiar with the national regulations for safety and general accident prevention in each country in accordance with national laws.

### 1.7.1. Possible hazard situations

- **Work at height:** corresponding safety measures shall be taken to guarantee the safe work at height. Depending on the domestic laws use appropriate hoisting equipment, etc. ladders, scaffolds, scissor lift or similar;
- **Heavy parts:** some of the platform lift parts are heavy, so it is important to lift it up by two persons or with hoisting equipment;
- **Danger zones:** secure the assembly area and surrounding area with warning signs, restriction tape;
- **Falling objects:** never work under the platform, if there is a person already working on it.


### 1.7.2. Electrical hazards

Symbol	Hazardous situation
	The electrical shock possibility in the machine room and / or near the lift parts containing electrical components!

In order to avoid the accidents, all the electrical installation work shall be carried out by attested personnel, in accordance with national laws.

Machine room cover shall be closed and locked all the time, when the work in the electrical compartment is not being carried out.

### 1.7.3. Personal safety equipment

	Wear personal safety equipment: safety shoes, gloves, helmet, safety glasses, earplugs, etc.
---	--

It is very important to use personal safety equipment during an installation and also using the installation tools and machines to avoid personal injuries.

### 1.7.4. How to contact us

If you need to contact our support service, please follow an information:

Tel.: +370 5231 0770

Mail.: support@barduva.eu

## 2. Preparation for installation

### 2.1. Attachment surfaces

Evaluate the strength of the mounting surfaces.

### 2.2. Tools and equipment required for installation

- Hammer / electric drill with drill kit for metal construction and concrete construction;
- Cordless screw driver with adjustable tightening torque;
- Level;
- Multimeter;
- Disc saw with disc;
- Laser distance meter;
- Plumb-line (plumb-line length depends on lift shaft height);
- Nylon rope;
- Hammer;
- Pencil;
- Tape-measure;
- Adjustable torque wrench (20 Nm - 200 Nm);
- Wrench kit;
- Clamps, 2 pcs.

### 2.3. Parts list verification

verify detail list if all the parts are present. Contact the dealer if any parts are missing.

### 2.4. Unpacking

Carefully unpack all the components.

In order not to scratch the painted surfaces it is recommended to work in gloves.

Thoroughly check the consignment for any possible damages or missing parts right after reception.

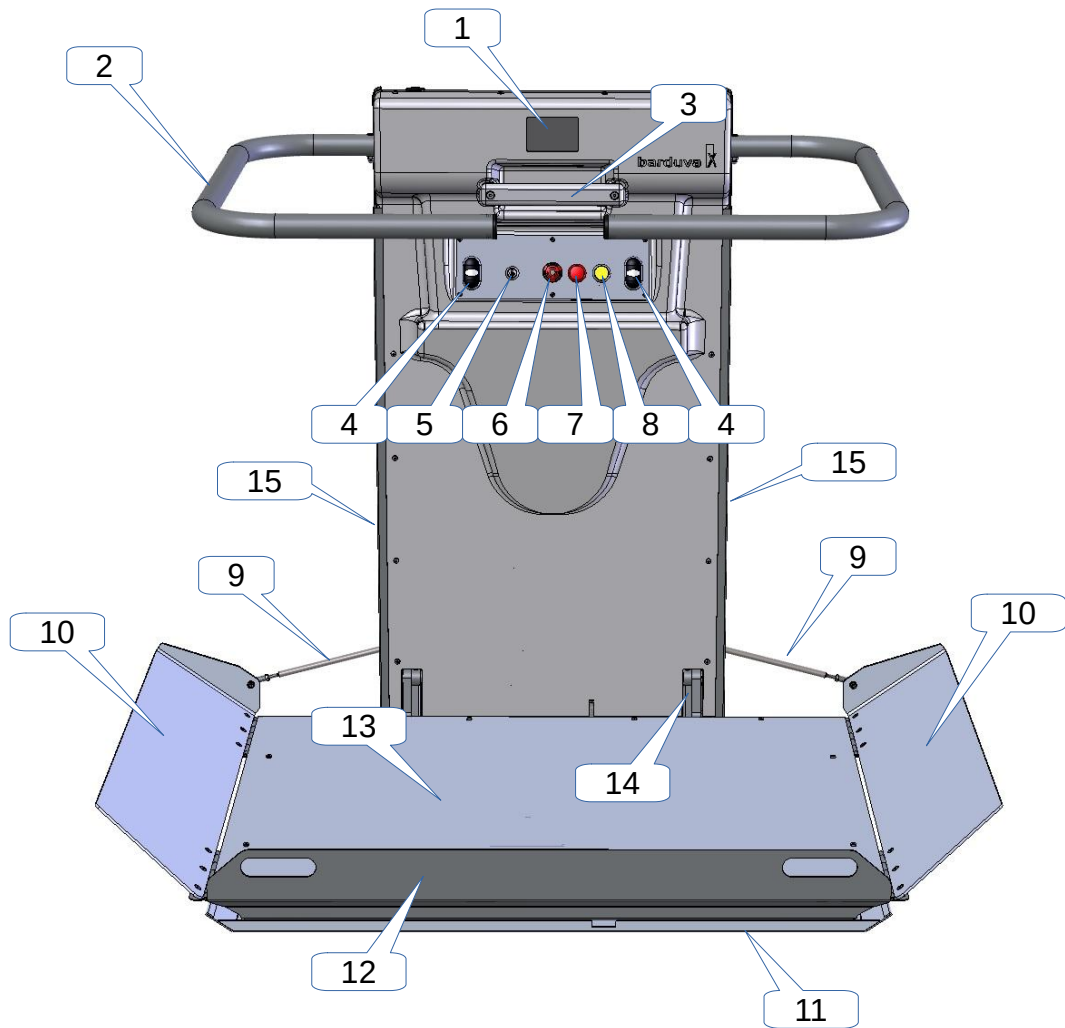
If there are any problems regarding the consignment notify the dealer. Complaints received long time after the reception of the consignment may not be accepted.

### 3. Stairlift explained

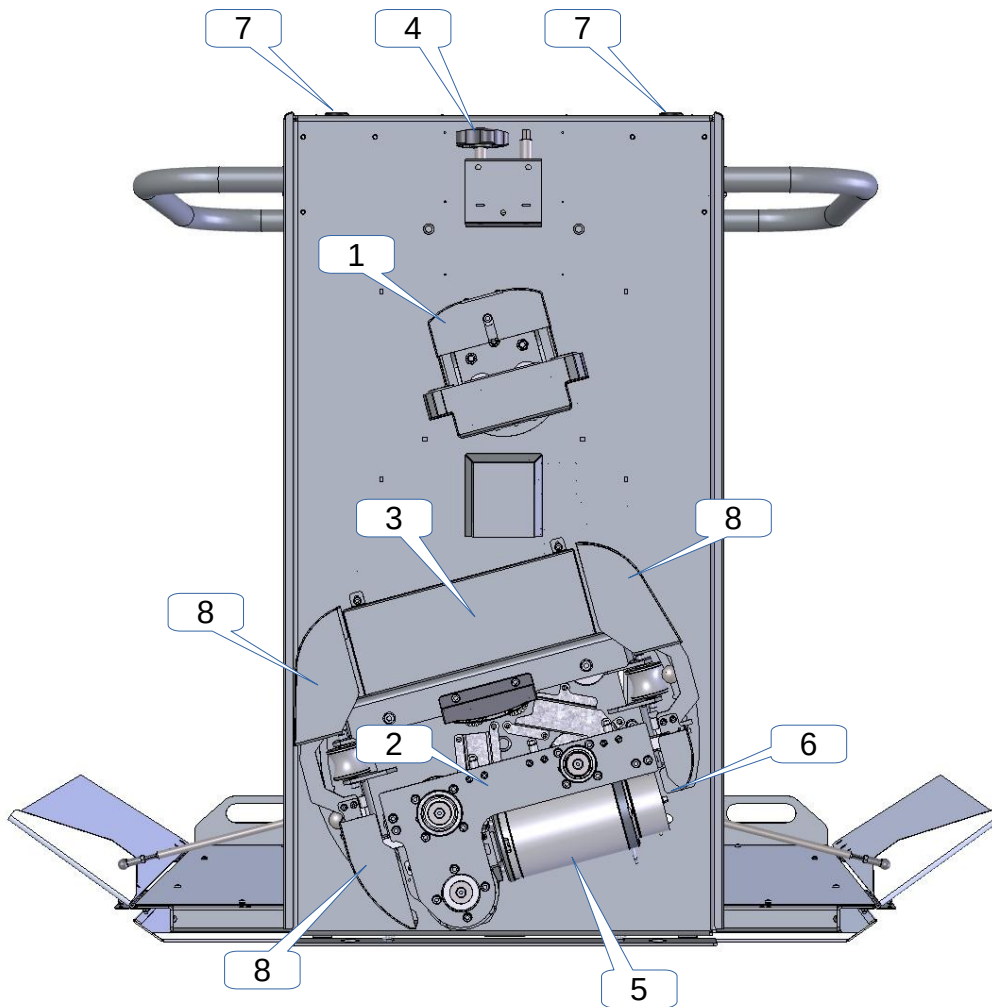
Lift consists of the following parts:

1. Rail-moving platform.
2. Guide rail.
3. Accessories.

#### 3.1. Platform

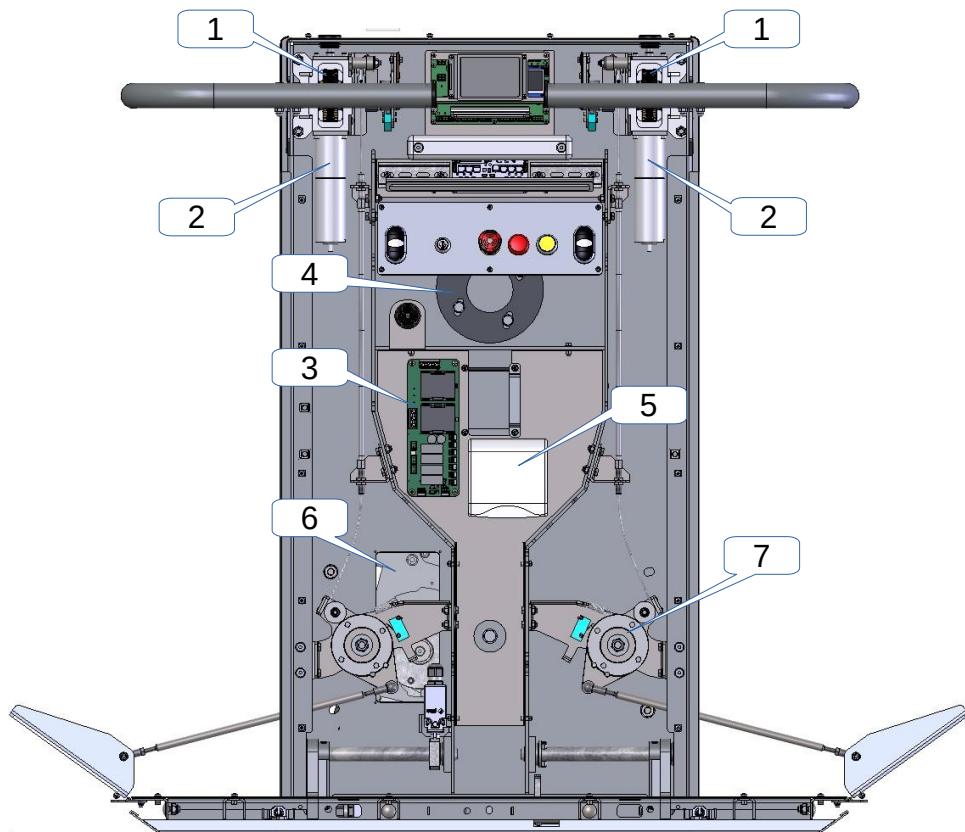


- |   |                         |    |                     |
|---|-------------------------|----|---------------------|
| 1 | Display                 | 9  | Ramp lift arm       |
| 2 | Restrain bar            | 10 | Ramp                |
| 3 | Handle                  | 11 | Sensitive bottom    |
| 4 | Motion buttons          | 12 | Side barrier        |
| 5 | Key switch              | 13 | Platform sole       |
| 6 | Emergency STOP button   | 14 | Platform hinge      |
| 7 | Indication of readiness | 15 | Side sensitive edge |
| 8 | Emergency call button   |    |                     |



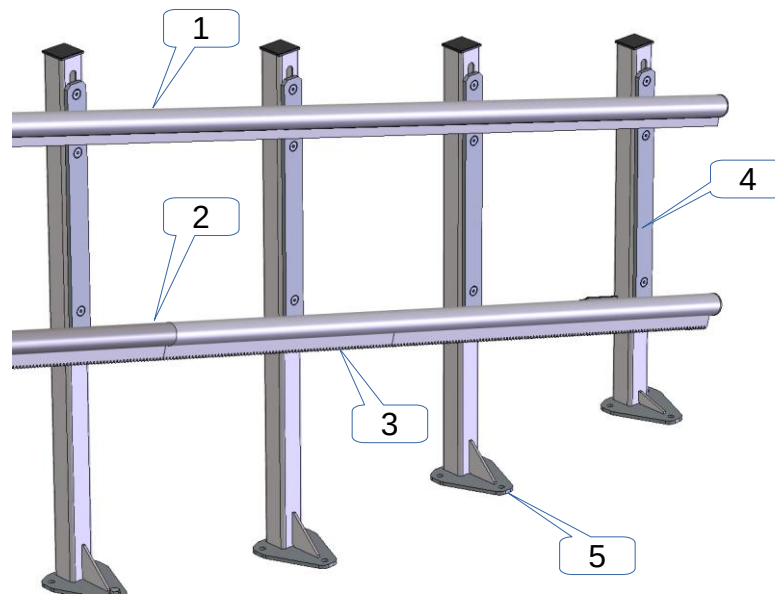
- |   |                        |   |   |
|---|------------------------|---|---|
| 1 | Upper carriage         | 5 | Motor   |
| 2 | Lower carriage         | 6 | Manual lowering handle insertion point          |
| 3 | Batteries              | 7 | Restrain bar manual lifting key insertion point |
| 4 | Manual lowering handle | 8 | Sensitive covers of lower carriage              |

### 3.2. On board components disposition

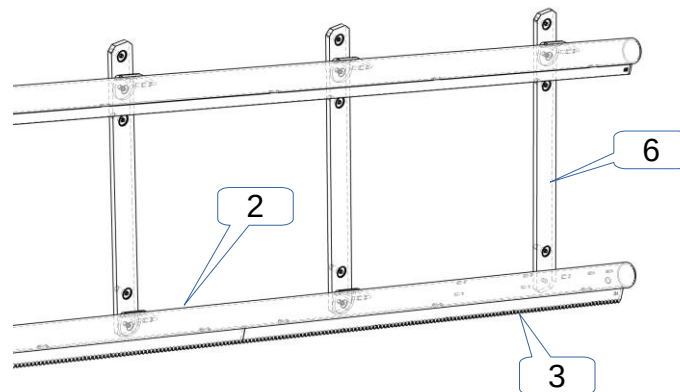


- |   |                               |   |                               |
|---|-------------------------------|---|-------------------------------|
| 1 | Restrain bar drive            | 5 | Wireless control transmitter  |
| 2 | Restrain bar drive motor      | 6 | Safety gear inspection window |
| 3 | Lift electronic control board | 7 | Ramp lifting pulley           |
| 4 | Upper carriage fastening ring |   |                               |

### 3.3. Guide rail



Guide rails fixed with poles



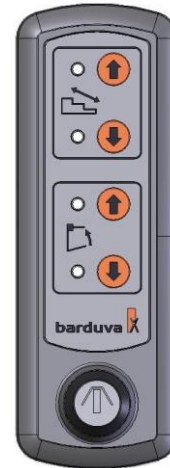
Guide rails fixed to the wall

- |   |                  |   |                 |
|---|------------------|---|-----------------|
| 1 | Upper guide rail | 4 | Guide rail bar  |
| 2 | Lower guide rail | 5 | Pole sole       |
| 3 | Rack             | 6 | Wall fixing bar |

### 3.4. Accessories

- Folding seat
- Attendant keypad
- Remote keypad

The radio remote controls are powered by 2 x AAA (1.5V) batteries. The batteries life is approx 1 year.



## 4. Installation of rails

### 4.1. Installation of rails on poles

Start with poles installation.

Arrange the poles on the floor and stair steps according to the track drawing.

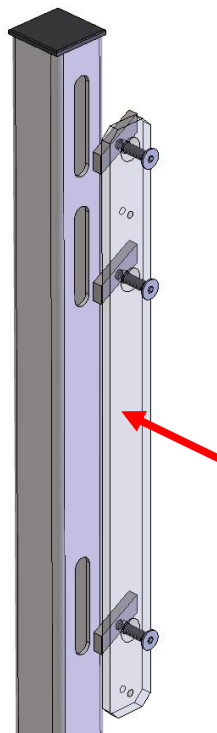
Drill holes in the floor and on the steps of the stairs and fasten the poles.



Method of fastening and depth of drilling is to be selected after an evaluation of the existing conditions. If the concrete in the place of attachment is very thin or there is a potentiality that it may crack, use the chemical compound and studs.

In the normal case use concrete anchors.

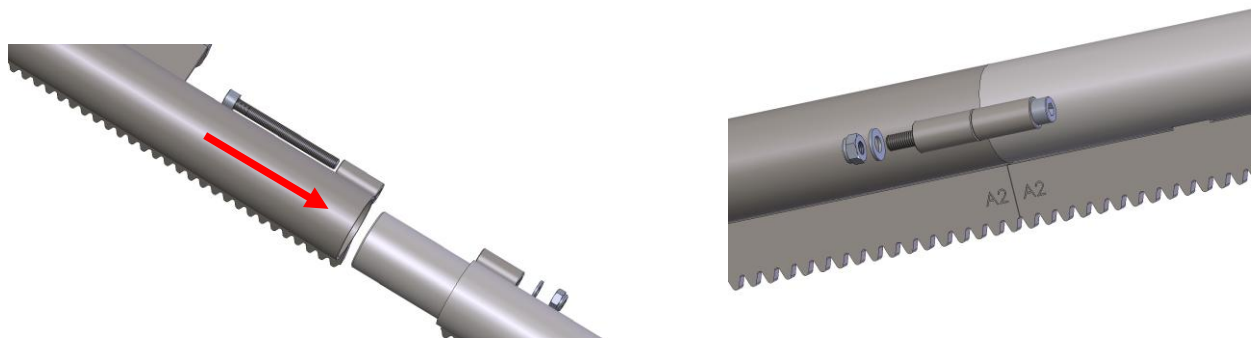
Fasten the rail bars to the poles as shown in the picture. Use M10 x 30 screws (AISI304) and nut blocks. Do not tighten strong, leave some slack for an adjustment.



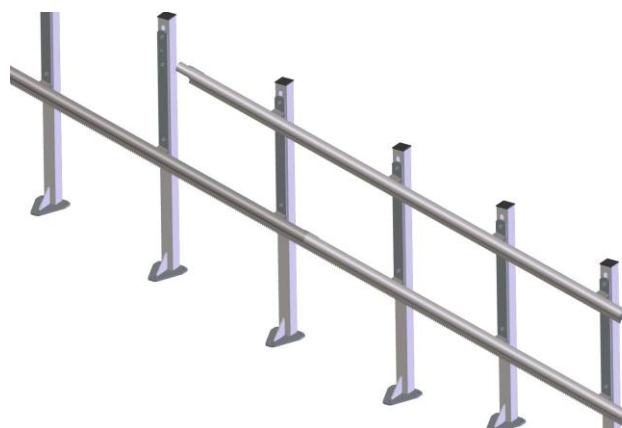
Attach the first bottom guide rail bar to the pole bars and secure with screws M8 x 16 (AISI304).



Connect the next element of the guide rail with the previous one by pressing on the coupling and tighten with a screw (M8 x 80 (Aisi304)) and a nut with washer as shown in the picture.



In this way install all the remaining parts and the top beam.



## 4.2. Installation of guide rails on the wall

To install the rails on the wall, first fully assemble the guide rail bars and connect them with the vertical bars.

Bring the assembled guide rail to the wall, fit them, correct the ends' heights, checked with the rail track drawing.

Fasten the guide rail at the ends to the wall.

Tighten the string and check that the guide rail is not bent, drill and screw all the remaining fixing points to the wall.

### 3. Installation of the platform

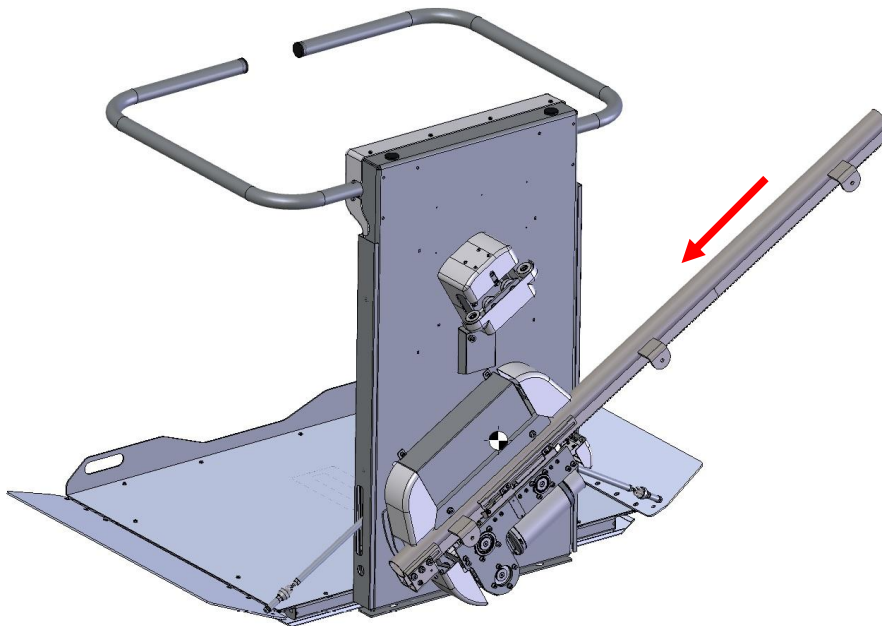
Place a lift platform assembly near the bottom stop. Keep the lift in a vertical position. This requires either an additional person to support the lift or use of an auxiliary lift to keep it upright.

Dismantle the lower first part of the guide rail.

Dismantle the upper carriage from the lift housing.

Bring the first lower guide rail part to the lower carriage,

Set the rail into the carriage inclination until the rack contacts the pinion.



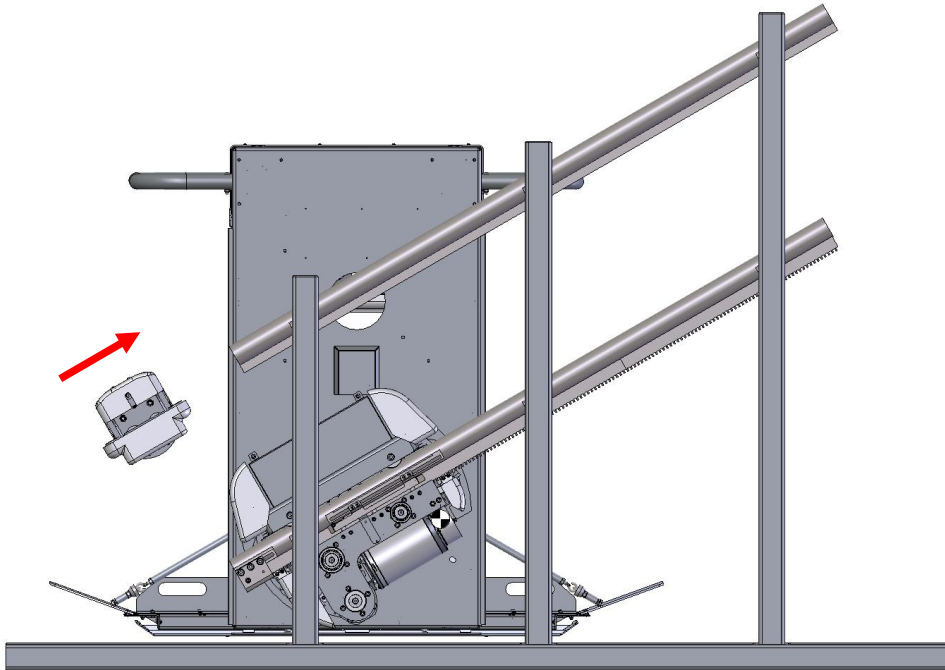
Apply the manual movement handle to drive the pinion into the contact with the rack.

Be careful to watch if the teeth of pinion contacts the rack teeth correctly.

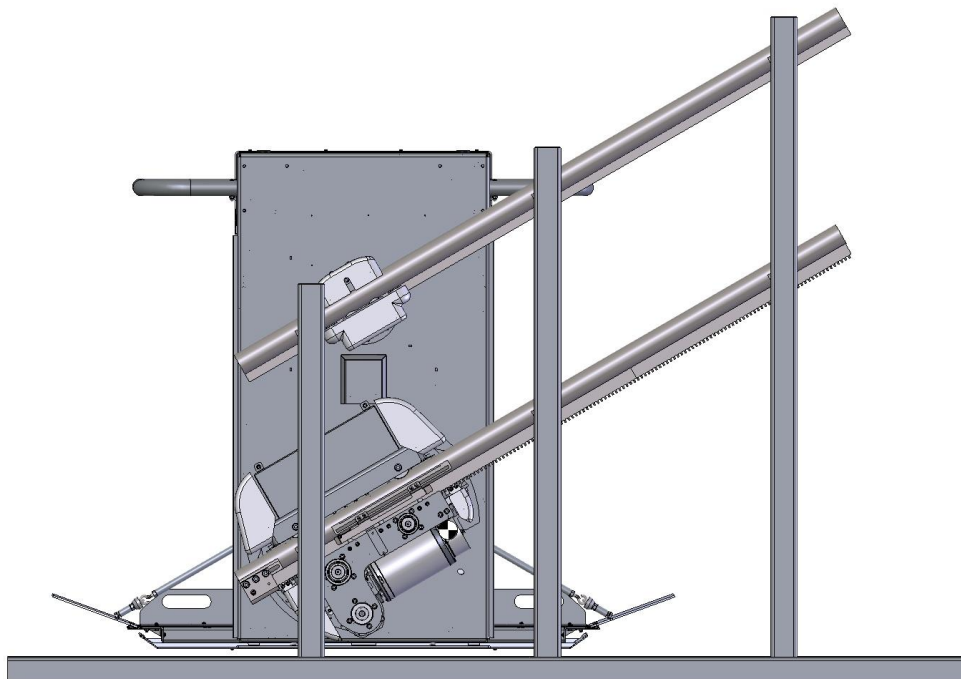
When the rail is inserted into the carriage, move the platform to the guide rail and reconnect the inserted guide rail with the guide rail assembly.

Bring the upper carriage and insert on the upper guide rail.

Tighten the upper carriage to the lift housing.



Use a level to adjust the straightness of the platform and tighten the carriages firmly.



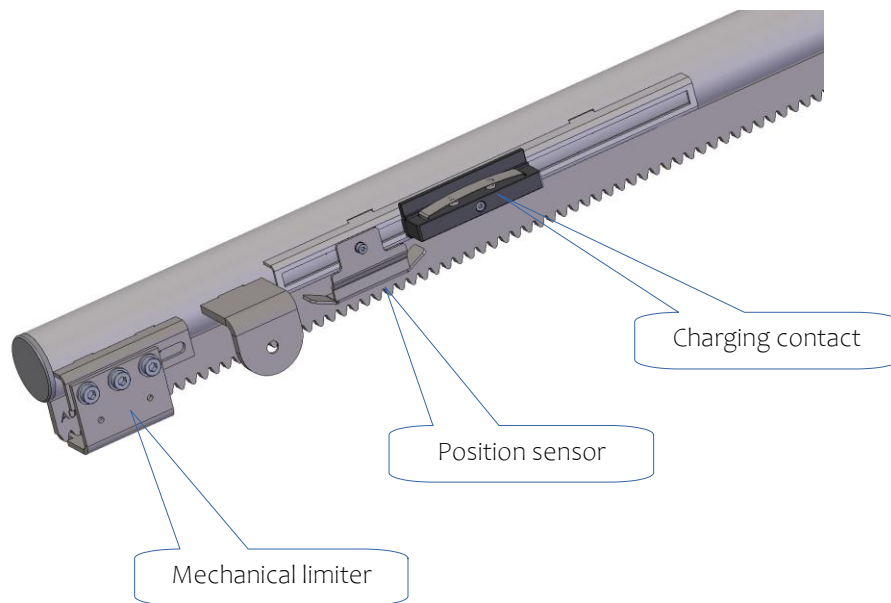
### 3.1. Installation of guide rail components

At the lower end install the mechanical travel limiter, position sensor and the charging contact, in the order shown in the picture.

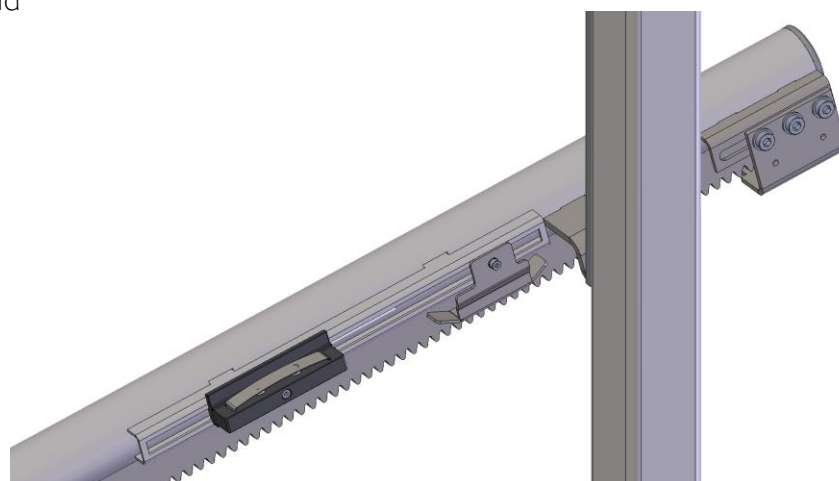
Pass the electric cables for charging and position sensors through the inner hole of the lower guide rail.

Install the mechanical stop and contacts at the upper end in reverse order and connect.

Lower end



Upper end



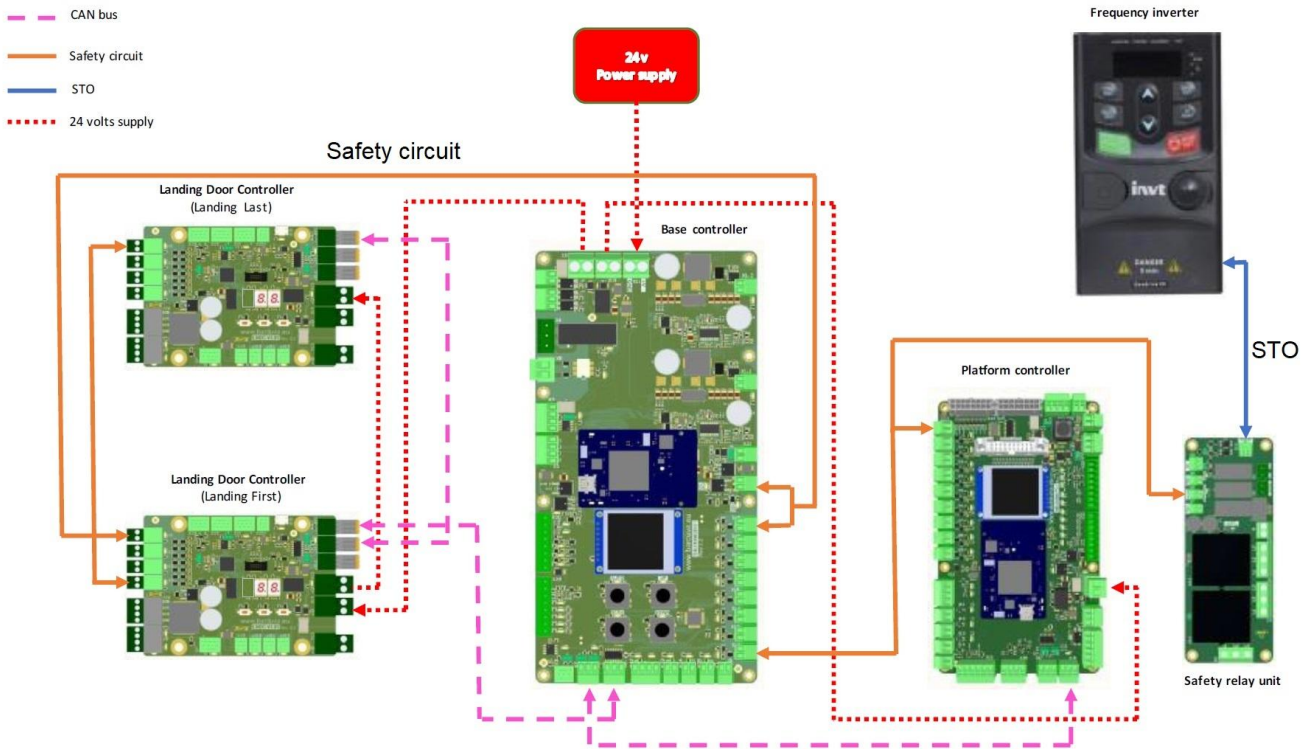
### 3.2. Adjustment of the loading ramps

Adjust the ramps to get a  $45^{\circ}$  angle between the platform and the ramp.

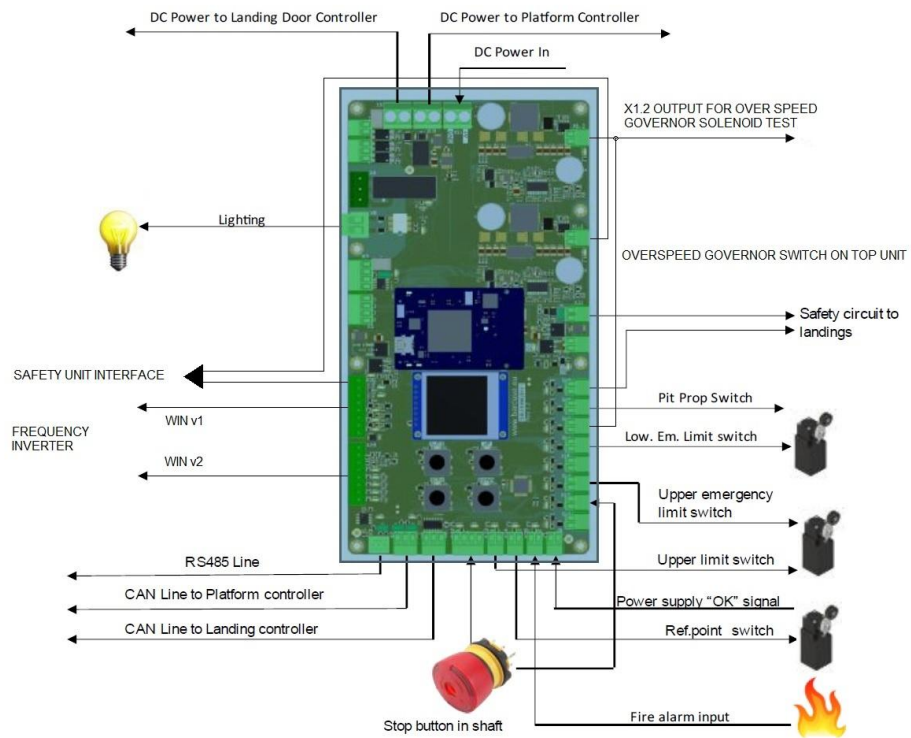
## 4. WIRING AND CABLE MANAGEMENT

Please refer to the lift original circuit diagram when performing wiring. Images bellow indicate interconnections of all controller boards and electrical components.

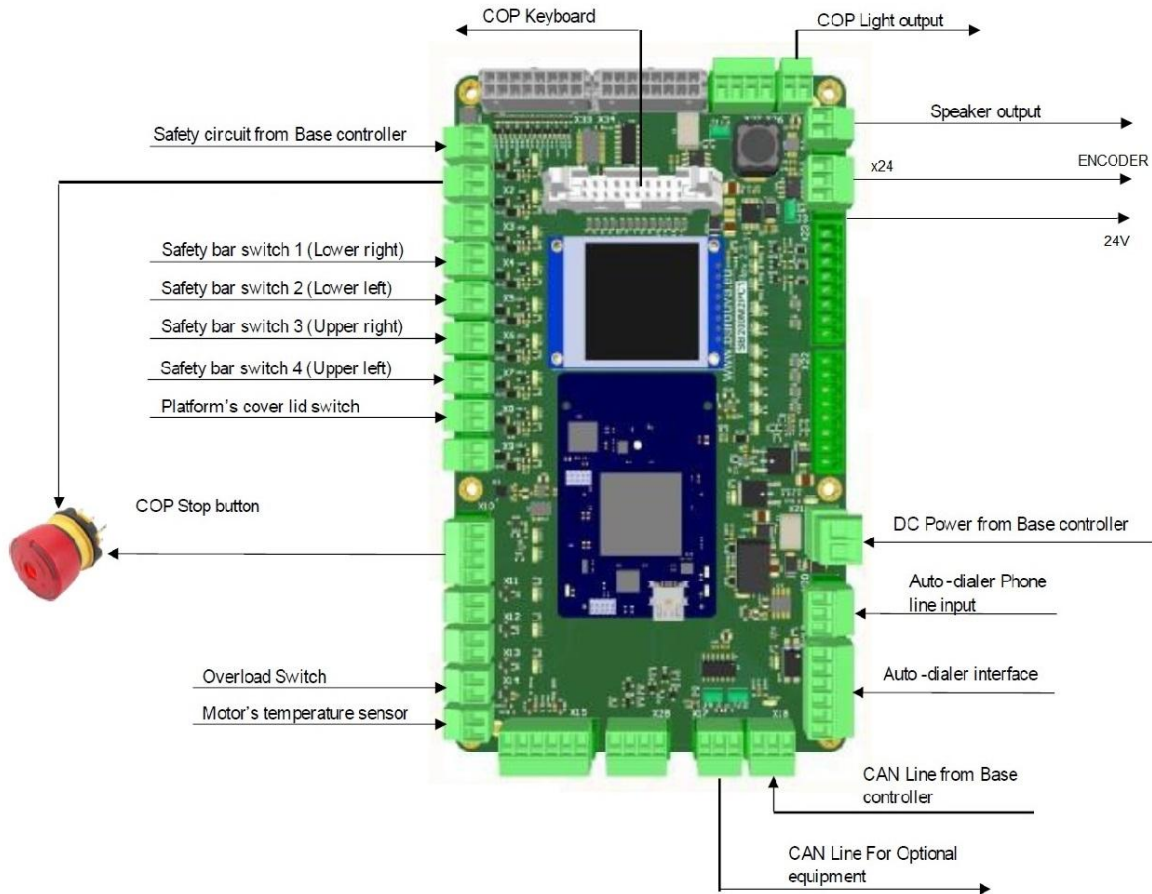
### Connections between all PCBs



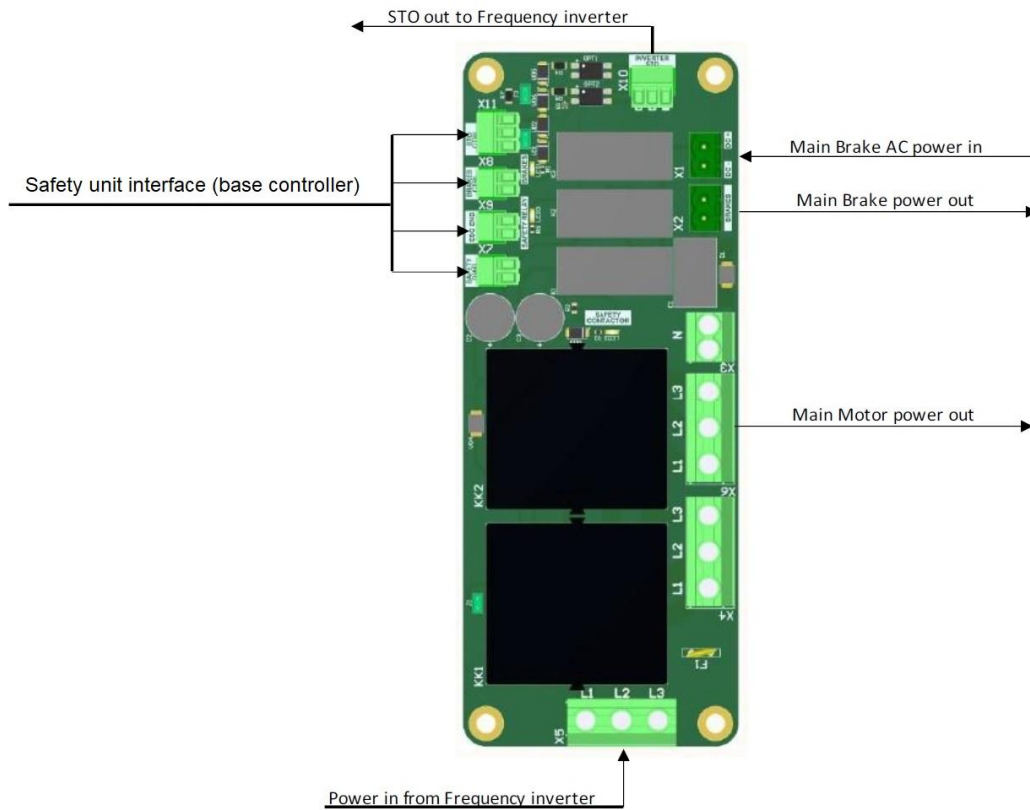
## Base Controller



## PLATFORM CONTROLLER



## Safety relay unit



## 12. DECLARATION OF CONFORMITY





User manual  
Stair lift GRB60

Release: 08/2024

Barduva JSC  
Beržuonos str. 2  
02121 Vilnius  
Lithuania

Tel: +370 5 231 0770

**E-mail: [sales@barduva.eu](mailto:sales@barduva.eu)**

Support: [support@barduva.eu](mailto:support@barduva.eu)

[www.barduva.eu](http://www.barduva.eu)